

Carmel/Clay Board of Parks and Recreation
Tuesday, June 11, 2024, 6:00 p.m.
John W. Hensel Government Center
10701 North College Avenue
Carmel, Indiana 46280

The Carmel/Clay Board of Parks and Recreation will govern in a proactive manner as it applies to providing safe and well maintained parks, recreation facilities and programs in a fiduciary and responsible manner. The Board is a policy governing board, fulfilling its duties as mandated by state statute, putting the welfare of the citizens of Carmel and Clay Township first, and enabling staff to manage the park and recreation system in a manner that reflects the vision and mission. Our promise to our citizens is that we will leave the parks and recreation system better than we found it.

Agenda

- 1. Roll Call**
- 2. Call to Order & Pledge of Allegiance**
- 3. Public Comments**
 - a. Katie Sepe, CPRP; CAPRA Review Team Lead for the Commission for Accreditation of Park and Recreation Agencies; Director of Human Resources for Naperville (Illinois) Park District
- 4. Staff Reports – Kurtis Baumgartner**
- 5. Committee Reports**
 - a. Finance Committee
 - b. Ad Hoc Committee appointments – Judy Hagan
- 6. Minutes – Secretary**
 - a. May 14, 2024 Park Board Meeting
- 7. Financial Reports – Treasurer**
 - a. Consolidated Financial Report for April 2024
 - b. CCPR P&L Statements for May 2024
- 8. Claims – Treasurer**
 - a. Claim Sheet June 11, 2024
 - b. Clay Township Claim Sheet June 11, 2024
 - c. CCPR Payroll for May 3, 2024, May 17, 2024, and May 31, 2024
- 9. Monetary Gifts, Grants, Partnerships, and Sponsorships for May 2024 – Eric Mehl**
- 10. New Business**
 - a. Consideration of Resolution G-2024-001 Entering into a Lease Agreement with Clay Township for ESE Office Space – Michael Klitzing
- 11. Old Business**
- 12. Attorney’s Report**
- 13. Director’s Report**
- 14. Information Items**
- 15. Park Board Comments / Discussion**
- 16. Adjournment**

Carmel/Clay Board of Parks and Recreation Board Meeting Agenda Item

<small>PRESENTER</small> Kurtis Baumgartner, Assistant Director of Parks and Recreation/COO	<small>ACTION REQUESTED</small> No Action Required
<small>ITEM/SUBJECT</small> Staff Reports	
<small>DOLLAR AMOUNT/FUND</small> N/A	<small>MEETING DATE</small> June 11, 2024

Selected news articles:

- Carmel opens waterpark for summer season
By Serena Thompson
WishTV, May 14, 2024
- StoryWalk® at Meadowlark Park: A Piece of Chalk
Carmel Clay Public Library
- Work begins on \$11M pedestrian bridge project linking Monon, Nickel Plate trails
By John Tuohy, Indianapolis Star
AOL, May 24, 2024

Standard monthly reports for April 2024:

- Fund 108 – ESE 12-Month Trailing Financial Trending Graph
- Fund 109 – Monon Community Center 12-Month Trailing Financial Trending Graph

Standard monthly reports for May 2024:

- Monon Community Center Pass Report
 - Membership Passes Trending Graph
- Employment Report
- Monthly Division Reports
 - Extended School Enrichment
 - Recreation & Facilities
 - Administration & Planning
 - Marketing & Communications
 - Parks & Natural Resources
- Financial Assistance (MCC and ESE)

[Home](#) / [News](#) / [Local News](#)

Carmel opens waterpark for summer season



Aerial view of The Waterpark in Carmel. They announced on 05/10 that they will be opening for the 2024 season. (Provided Photo/ Carmel Clay Parks and Recreation via Facebook)

157
Shares

152

2

Listen to this article
Audio by Carbonatix



by: Serena Thompson

Posted: May 14, 2024 / 01:51 PM EST / Updated: May 15, 2024 / 05:10 PM EST

CARMEL, Ind. (WISH) — The Waterpark in Carmel will open for the summer starting May 25 and will remain open through Aug. 4.

The Waterpark will offer various activities for all ages which includes a lazy river, kiddie pool, AquaClimb and more. It is located at 1195 Central Park Dr. W. Operating hours will be from 11 a.m. to 7 p.m. daily.

Visitors can purchase day passes at varying prices:

Subscribe to get the headlines in your email

Your Email

Subscribe!



How to Stay Positive with Crohn's Disease

CLICK HERE

Healthgrades - Sponsored

\$17 for adults (ages 16-64)

\$14 for youth and seniors (ages 3-15; ages 65+)

Season passes are available for purchase in person or online at carmelclayparks.com.

The public is encouraged to join [The Waterpark Facebook group](#). For more information about The Waterpark visit carmelclayparks.com/the-waterpark.

TRENDING STORIES

[Kindergarten teacher killed; husband arrested](#)

[Man fights against roundabout on north side of Indianapolis](#)

[Lauren Spierer vanished 13 years ago; family issues statement](#)

[Indianapolis mother accepts plea deal in missing baby Amiah case](#)

[BMV taking comments on proposed closing of license branch](#)

Search The

Catalog ▾

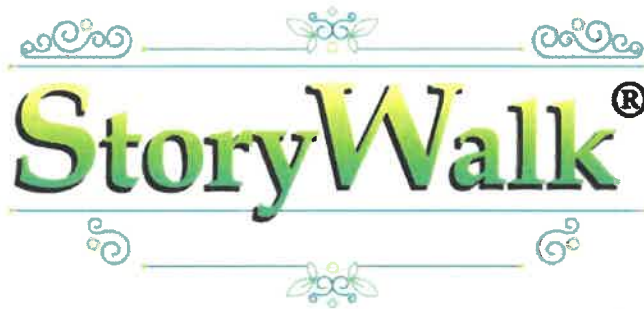
Search the Catalog



[Advanced Search](#)

Event finished. This event was in the past: 12:00am on Tuesday, June 04, 2024

[View other events](#)



StoryWalk® at Meadowlark Park: A

Piece of Chalk

Available June 4–July 1



Tuesday, June 04

All day

[Add to Calendar](#)



Off-Site

Families can enjoy a nature walk and story by participating in our StoryWalk at Meadowlark Park, accessible from both Meadow Lane and the Monon Trail.

Visit [Meadowlark Park \(450 Meadow Ln.\)](#) from June 4–July 1, when the library will be partnering with Carmel Clay Parks & Recreation to present a StoryWalk featuring the book *A Piece of Chalk* by Jennifer Ericsson with illustrations by Michelle Shapiro. Follow the signs from the playground and go around the boardwalk to read this book about an imaginative little girl who draws a story with a brand-new box of chalk.

Also, be sure to join us anytime between 6:00-7:00pm on June 4 to kick off this StoryWalk by participating in a [group chalk project at the Meadowlark Park playground!](#)

AGE GROUP: | Kids Ages 5-12 | Kids Ages 0-5 |

EVENT TYPE: | Exhibit/Display |

TAGS: | |

Venue details

Meadowlark Park

450 Meadow Ln.

Carmel, IN 46032

Work begins on \$11M pedestrian bridge project linking Monon, Nickel Plate trails

Gannett

JOHN TUOHY, INDIANAPOLIS STAR

May 24, 2024 at 5:36 AM



A pedestrian bridge is planned at 106th Street over the White River

A pedestrian bridge being built over the White River comes with a price tag of \$11 million but officials said it is worth the investment to link the Monon and Nickel Plate trails, two of the most prominent trail systems in the state.

"This will connect and help create one of the largest trail systems in Midwest," Delaware Township Trustee Debbie Driskell said. "It is much needed because the

ways to cross the river now are not conducive to walking and biking.”

The crossing at 106th Street near Allisonville Road will reach from Carmel’s [Hazell Landing Park](#) to Fishers’ [Heritage Park](#), providing a way for users – through trail links – to get from the Monon Trail in Carmel to the Nickel Plate Trail in Fishers.

The cost of the 500-foot-long, 14-foot wide span and connections is being shared by several agencies and is higher than what Fishers paid for the tunnel under the Nickel Plate, or has budgeted for a Nickel Plate bridge over 96th Street. But that’s because it’s more expensive to build the bridge near the environmentally sensitive river, said Carmel Clay Parks and Recreation Director Michael Klitzing.

More: [Live next to the Nickel Plate Trail? The feds could owe you tens of thousands of dollars.](#)

“The complexity is that the bridge is predominately constructed within the floodway,” Klitzing said in an email. “Due to ... other projects along the river, we had to design the bridge to minimize backwater, to effectively avoid an impact to the flow of water in the river.”

Klitzing also said construction costs have risen in the last couple of years and [the first choice for the bridge's location, near Conner Prairie, was scrapped](#) because it would have cost even more.

Clay Township is providing the bulk of the funding, \$5 million; followed by the Carmel Clay Parks, \$3 million; Hamilton County, \$1.6 million; Delaware Township, \$1.3 million; and the city of Fishers, \$400,000.

Not all the money is dedicated to the bridge itself.

Roughly \$1.5 million will be used for a trail linking the bridge to Hazell Dell Parkway and a trailhead parking lot on the Carmel side. Delaware Township's \$1.3 million will fund the approach to the bridge and connection to the 106th Street pedestrian trail on the Fishers side.

Construction of the bridge has begun and it is expected to be finished in August, 2025, Fishers corporation counsel Lindsey Bennett said at a recent city council meeting.

The connection will allow bicyclists and joggers on the multi-use path on 106th Street to travel a seven-mile distance between the Monon and the Nickel Plate on dedicated paths along 106th Street. It will also connect with the White River Greenway in Carmel, which is being lengthened 2.5 miles northward to 146th Street.

Eventually the Nickel Plate and Monon will connect to the south in Indianapolis at 42nd Street when Indianapolis finishes its portion of the Nickel Plate Trail. A connection between the trails will also be forged in the north when Midland Trace Trail through Noblesville and Westfield is complete.

Call IndyStar reporter John Tuohy at 317-444-6418. Email at john.tuohy@indystar.com and follow on [X/Twitter](#) and [Facebook](#).

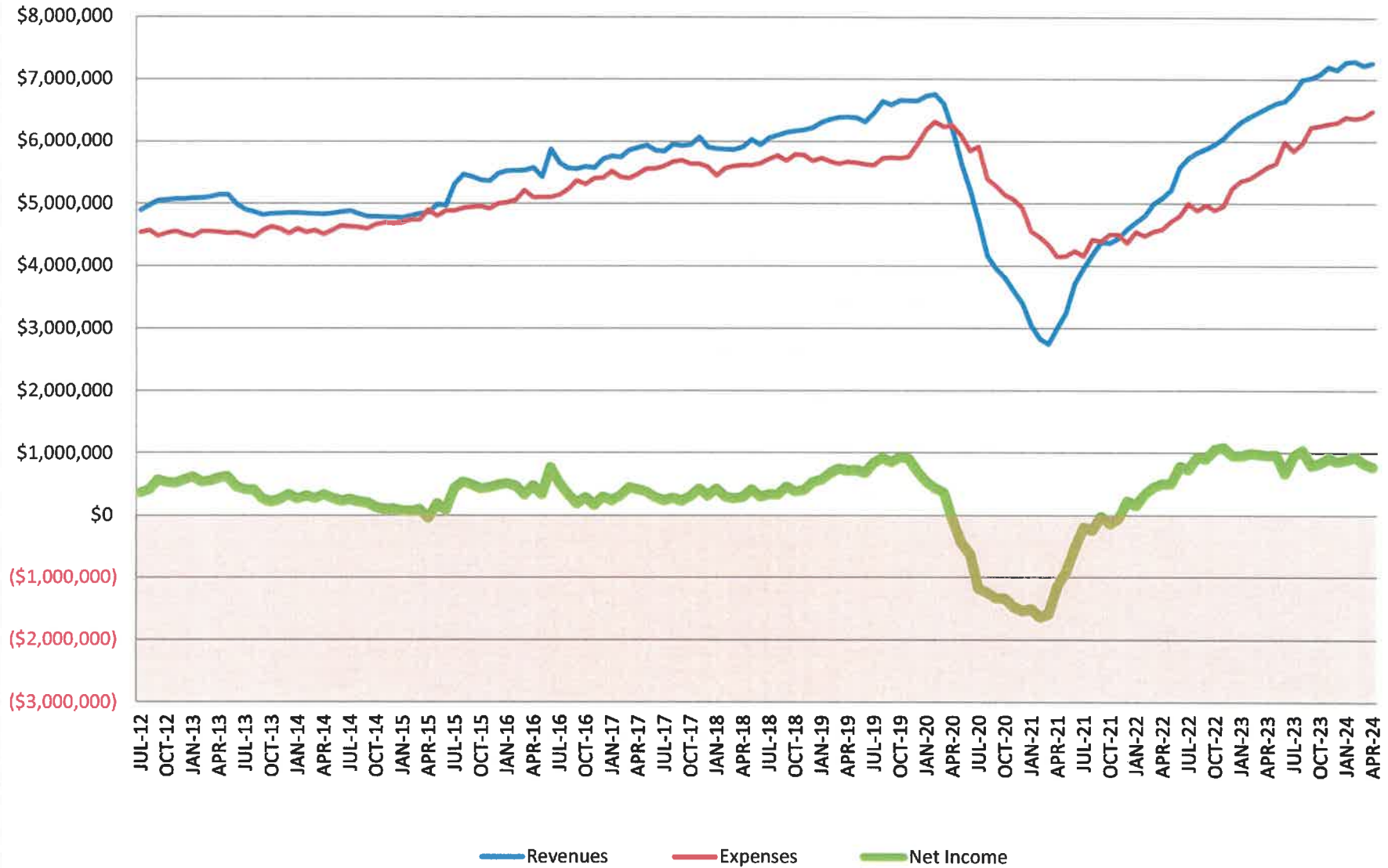
This article originally appeared on Indianapolis Star: [Work starts on trail link for Monon, Nickel Plate in Carmel, Fishers](#)

FUND 108 - EXTENDED SCHOOL ENRICHMENT

12-MONTH TRAILING FINANCIALS - 04/30/24



FUND 109 - MONON COMMUNITY CENTER 12-MONTH TRAILING FINANCIALS - 04/30/2024



MONON COMMUNITY CENTER PASS REPORT

MAY 2024

	ANNUAL	MONTHLY	OTHER	TOTAL	% ¹	- NET CHANGE -	
						PREV. MONTH	PREV. YEAR
<u>MCC MEMBERSHIP PASSES</u>							
Youth	5	357		362		5	9
Adult	37	3,000		3,037		79	51
Senior	14	374		388		15	28
Senior (Legacy Pricing)	9	70		79		0	(13)
Military	0	19		19		(3)	(12)
Household	11	1,316		1,327		107	78
MCC Passes	76	5,136		5,212		203	141

Add'l HH Members				4,915		355	253
MCC Members				10,127	64%	558	394

CORPORATE MEMBERSHIP PASSES

Youth	0	8		8		0	1
Adult	7	313		320		33	38
Senior	0	22		22		1	(2)
Senior (Legacy Pricing)	0	0		0		0	0
Household	3	148		151		25	8
Corporate Passes	10	491		501		59	45

Add'l HH Members				540		88	24
Corporate Members				1,041	7%	147	69

INSURANCE-PAID MEMBERSHIP PASSES

Prime			1,105	1,105		116	(118)
SilverSneakers			990	990		41	(6)
Active&Fit			1,054	1,054		97	173
Silver&Fit			220	220		16	14
Optum-Renew Active			1,269	1,269		82	77
Insurance Passes/Members			4,638	4,638	29%	352	140

TOTAL PASSES	86	5,627	4,638	10,351		614	326
Percent of Total Passes	1%	54%	45%				

TOTAL MEMBERS				15,806		1,057	603
----------------------	--	--	--	---------------	--	--------------	------------

¹ Percent of Total Members

CARMEL CLAY TRACK PASSES

Track Passes				1,595		22	271
Carmel Clay Track Passes				1,595		22	271

SEASONAL WATERPARK PASSES

Youth				55			
Adult				46			
Senior				5			
Household				50			

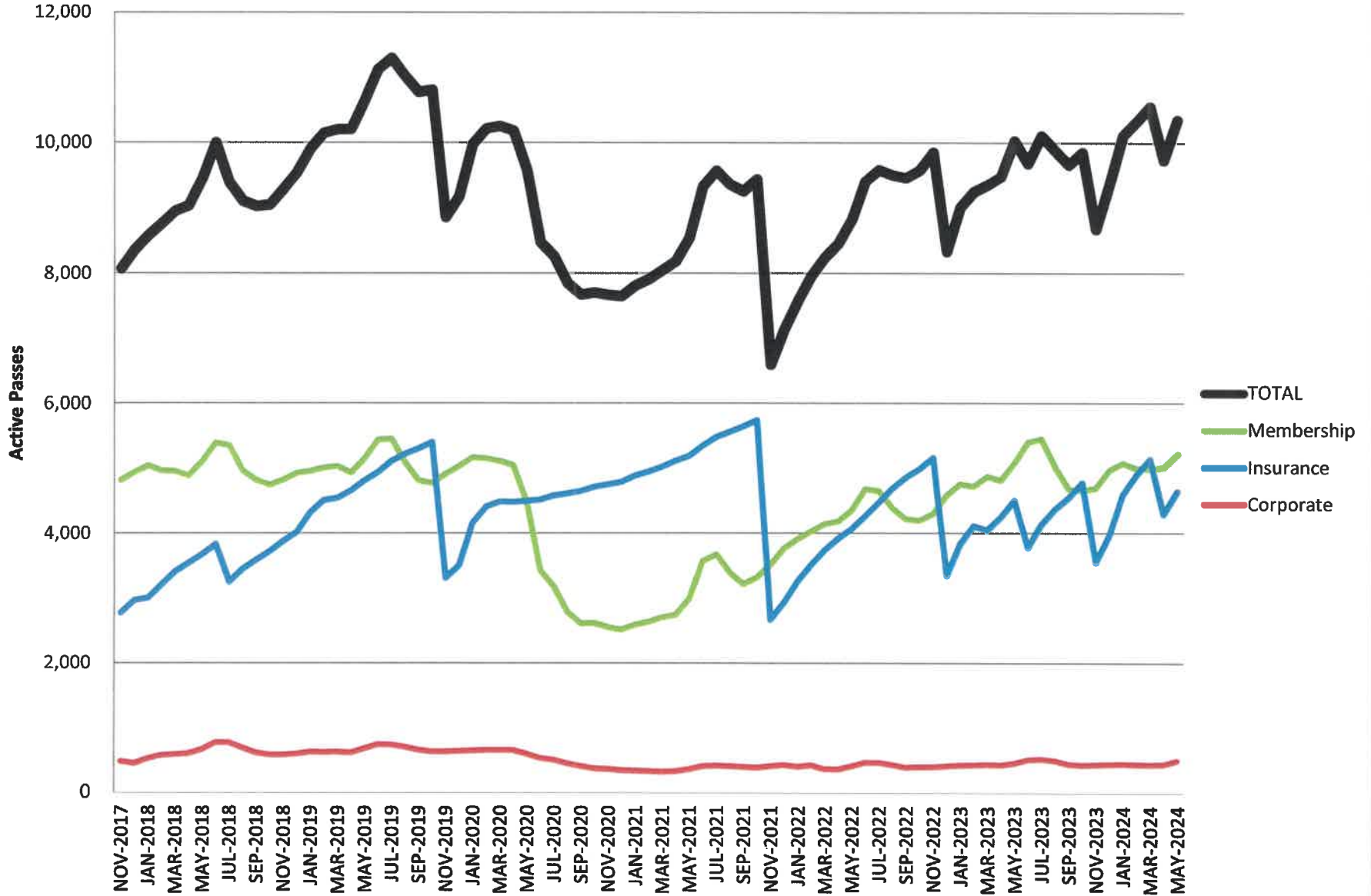
TOTAL SEASONAL WP PASSES				156			
---------------------------------	--	--	--	------------	--	--	--

Add'l HH Members				191			
------------------	--	--	--	-----	--	--	--

TOTAL SEASONAL WP MEMBERS				347			
----------------------------------	--	--	--	------------	--	--	--

MONON COMMUNITY CENTER

ANNUAL, MONTHLY & INSURANCE PASSES AS OF 5/31/2024



EMPLOYMENT REPORT | MAY 2024

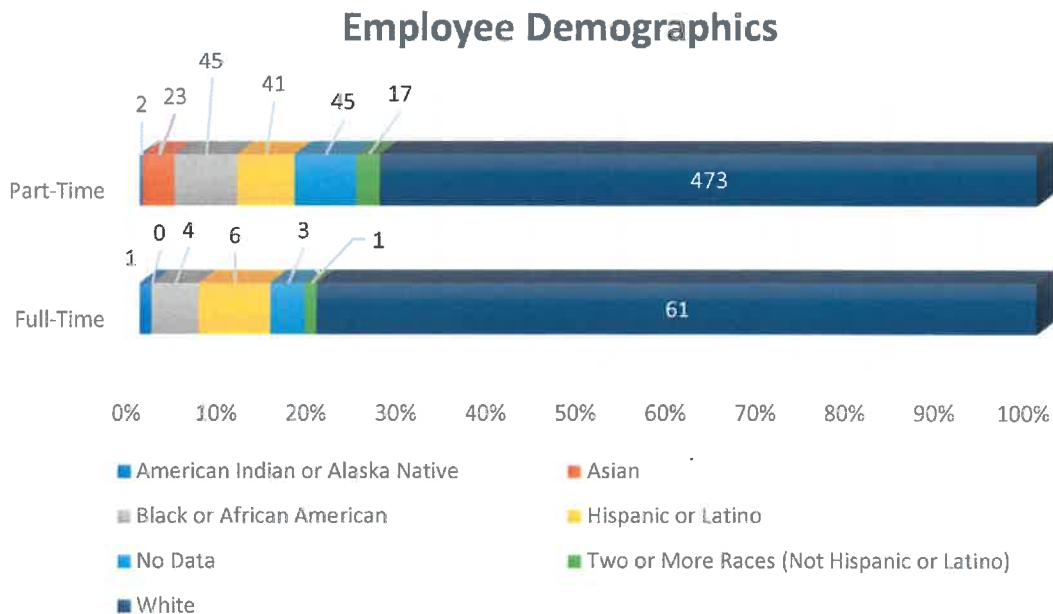
Employee by Status	Full-Time	Part-Time	Subtotal
All Employees ⁱ	76	696	772
Leaves of Absence ⁱⁱ	0	50	50
Period Ending Totals	76	646	722

ⁱ Includes employees in "Active" and "Leave" status.

ⁱⁱ "Leaves of Absence" count includes seasonal employees.

Employment by Division	Full-Time	Part-Time	Subtotal
Executive	3	0	3
Administration + Planning	9	3	12
Extended School Enrichment/SCS	25	193	218
Marketing + Communications	4	0	4
Parks + Natural Resources	18	16	34
Recreation + Facilities	17	434	451
Period Ending Totals	76	646	722

Employee Demographics



Employee Demographics	Full-Time	Part-Time
American Indian or Alaska Native	1	2
Asian	0	23
Black or African American	4	45
Hispanic or Latino	6	41
No Data	3	45
Two or More Races (Not Hispanic or Latino)	1	17
White	61	473
Total:	76	646

EXTENDED SCHOOL ENRICHMENT | May 2024

ESE is founded on the belief that each and every student is capable of being successful. We are committed to setting high expectations and assuring the development of a strong foundation in basic life skills.

After School Program

Participation Rates	
Total Registered Students (as of 5/23/24)	1,628
Comparison from May 2023 to May 2024	-249 (May 2023: 1,877)
Average Daily Attendance per School in May	80 participants (May 2023: 77)

Carmel Clay Schools (CCS) Employee Discounts (Fee Waivers)	
Total Number of CCS Employees Receiving ESE Discounted Rates	126
Total Value of CCS Employee Discount Fee Waivers for May 2024	\$17,140.51

ESE May 2024 Staff Star	
Carmel	Veronica Farrell
Cherry Tree	Rex Fallis
Clay Center	Jacob Moon
College Wood	Nicole Ambrogi
Forest Dale	Eugin William
Mohawk Trails	Kiki Marsh
Prairie Trace	Sutton Arnold
Smoky Row	Kiara Jackson
Towne Meadow	Samantha Dennis
West Clay	Jacob Wolfe
Woodbrook	Hannah Oh

Program Highlights

With the lovely weather during the month of May, our ESE participants have been enjoying time outdoors. We've had a fantastic school year, and we are already looking forward to next school year with our kiddos!



RECREATION & FACILITIES REPORT | May 2024

MONON COMMUNITY CENTER / THE WATERPARK

Annual/Monthly Memberships Sold/Rejoined

MAY 2024	Previous Month	Previous Year
988	513	870

Day/Punch Pass Visits

MAY 2024	Previous Month	Previous Year
5,011	2,496	5,597

Total Member Visits

MAY 2024	Previous Month	Previous Year
47,131	45,860	45,893

Group Fitness Class Participation

MAY 2024	Previous Month	Previous Year
11,040	12,124	10,084

Corporate Wellness Package

Total	
Participating Companies	15
Passholders	1,041

RECREATION PROGRAMMING

- We offered 94 general recreation programs and served 1,210 participants.
- Total served including Group Fitness classes was 12,250 participants.

**Administration & Planning Division
Gift Fund 853 Report
May 2024**

Designated For	Beginning Cash Balance	Current Month Revenues	Current Month Expenses	Ending Cash Balance
Bear Creek Park	\$ 68,015.11	\$ -	\$ -	\$ 68,015.11
Interpretive Signage	\$ 13,309.71	\$ -	\$ -	\$ 13,309.71
Invasive Species Mgmt/Restoration	\$ -	\$ -	\$ -	\$ -
Central Park North Woods	\$ 2,000.00	\$ 200.00	\$ -	\$ 2,200.00
Pedal & Park	\$ 5,917.92	\$ -	\$ -	\$ 5,917.92
Staff Appreciation	\$ 1,269.84	\$ 100.00	\$ 228.60	\$ 1,141.24
Staff Professional Development	\$ 10,000.00	\$ -	\$ -	\$ 10,000.00
Volunteer Program	\$ 90.52	\$ -	\$ -	\$ 90.52
West Park	\$ 2,160.00	\$ -	\$ 2,160.00	\$ -
James Engledow Memorial	\$ 2,750.00	\$ -	\$ -	\$ 2,750.00
Monon Greenway Dog Pots	\$ 1,500.00	\$ -	\$ -	\$ 1,500.00
Recreation Programming	\$ 5,450.00	\$ 4,600.00	\$ -	\$ 10,050.00
Undesignated (General)	\$ 13,253.35	\$ -	\$ -	\$ 13,253.35

Month End Cash Balance **\$ 128,227.85**

I hereby certify that the amounts listed above are true and correct and that I have audited the same in accordance with IC 5-13-6-1, *et seq.*

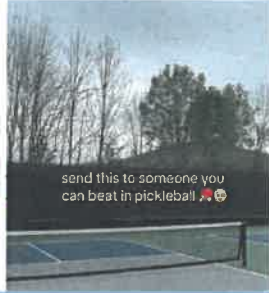
DocuSigned by:
Eric Mehl
A6D9ED7CD8E041C
Administration & Planning Director

MARKETING & COMMUNICATIONS REPORT | May 2024

SOCIAL MEDIA *This month, these were our top posts across all platforms.*



Top Facebook Post
One Week to Waterpark Opening
74 Engagements
19,053 Impressions



Top Instagram Post
Pickleball Competition
451 Engagements
8,275 Impressions



Top LinkedIn Post
Mix & Mingle Event
9 Engagements
307 Impressions



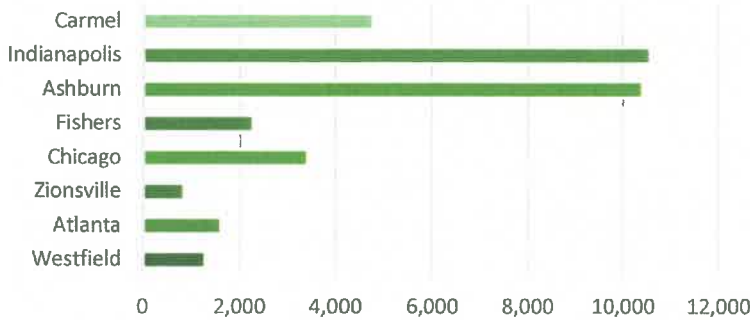
Top X Post
Nature Keepers Press Release
0 Engagements
382 Impressions



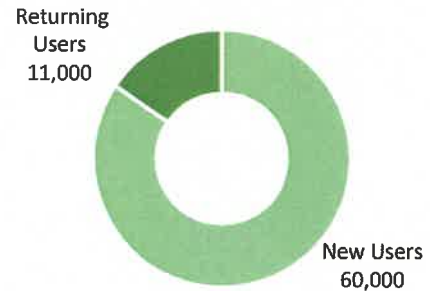
Top TikTok Post
The Waterpark is an 8th wonder
96 Engagements
5334 Impressions

WEBSITE *This month, the website had the following page views from the user demographics listed below.*

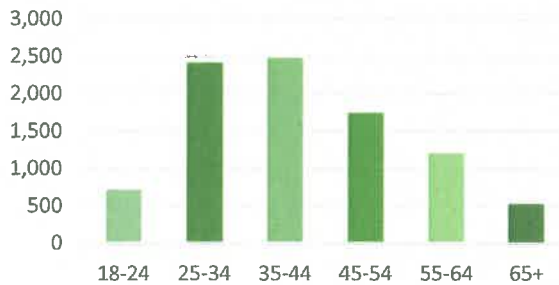
LOCATION



NEW VS. RETURNING USERS



AGE



TOTAL PAGE VIEWS

222,627

TOP WEB PAGES

PAGE VIEWS

% OF TOTAL

The Waterpark
MCC
Home Page
Active-Membership
Active-Home
Group Fitness

31,979
14,906
9,027
8,580
7,201
3,701

14.4%
6.7%
4.1%
3.9%
3.23%
1.7%

EARNED MEDIA

- Kids Out and About | [Adaptive 5k – With Carmel Clay Parks and Recreation](#)
 - Hamilton County Reporter | [Registration now open for Carmel Clay Parks & Recreation Nature Keepers Program](#)
 - Hamilton County Reporter | [Kick off summer in Carmel at Midtown Block Party](#)
 - Wish TV | [Carmel opens waterpark for summer season](#)
 - Indy's Child | [5 Indianapolis Water Parks for an Unforgettable Birthday Party](#)
 - Hamilton County Reporter | [The Waterpark in Carmel to open May 25](#)
 - Current Publishing | [Carmel in Brief](#)
 - Upparent | [Monon Center – Carmel Clay Parks & Recreation](#)
 - WOMI | [Best of Indiana: 13 Waterparks to make a splash this summer](#)
 - Current Publishing | [Carmel City Council to have more oversight of park impact fees expenditures](#)
 - The Reporter | [Carmel City Council unanimously approves changes to the way city allocates park impact fees](#)
 - IndyStar | [Here's which pools are open for Memorial Day Weekend](#)
 - IndyToday | [Indy hosting a free community pool day](#)
 - Carmel Clay Public Library | [StoryWalk at Meadowlark](#)
 - AOL | [Work begins on \\$11M pedestrian bridge project linking Monon, Nickel Plate, trails](#)
 - Town Planner | [Monon Mixers](#)
-

PARKS & NATURAL RESOURCES REPORT | May 2024

NATURE PROGRAM PARTICIPATION

DATE	PROGRAM	ATTENDANCE/REGISTERED
5/2	Master Naturalist	25/25
5/9	Master Naturalist	25/25
5/3	Knee High Naturalist	7/7
5/17	Knee High Naturalist	7/7
5/22	Knee High Naturalist	7/7
5/24	Knee High Naturalist	7/7
5/12	Free Fishing Day – Meadowlark	50/25
5/16	My Park Series – River Heritage	2/13
5/22	World Biodiversity Day	5/19
May	Total Registrations	135/135

VOLUNTEER SERVICE PARTICIPATION

PROGRAM CATEGORY	HOURS	TIME SHEETS
Adaptive	71	5
MCC Programs	3.5	1
Adopt-A-Park	55.75	13
Park Stewardship (<i>Independent Service, Group Projects, Public Volunteer Projects</i>)	39.5	8
Citizen Science	47.5	26
TOTALS	217.25	53

PARK OPERATIONS

- Lenape Trace picnic shelter has received fresh painting to maintain and preserve the structure.
- Inlow playground surfacing repairs are 90% completed.
- Inlow picnic shelter ceilings have received fresh clear coat stain to protect the wood for long term.
- Founders community shelter, restroom, and storage building area has received fresh paint to maintain the exposed beams and trim.
- Deteriorating and poorly installed surface drain grates were replaced by staff at the Waterpark.
- Prepped the Rohrer Road Monon trailhead with concrete and conduit for a new AED cabinet to arrive soon.
- Large sections of bush honeysuckle were removed along the Hagan Burke Trail.

**Carmel • Clay
Parks & Recreation**

**Financial Assistance
January - May 2024**

Month	MCC Passes		MCC Programs		ESE & Summer Camps	
	Customers Served	Value	Customers Served	Value	Number of Students	Value
January	9	575.00	0	0.00	51	11,395.70
February	9	572.00	0	0.00	51	12,814.20
March	9	572.00	0	0.00	51	13,907.10
April	9	572.00	0	0.00	51	10,325.00
May	11	590.75	0	0.00	51	10,229.80
June						
July						
August						
September						
October						
November						
December						
Total		\$ 2,881.75		\$ -		\$ 58,671.80

MCC Passes	\$ 2,881.75
MCC Programs	\$ -
ESE & Summer Camps	\$ 58,671.80
Total Financial Assistance	\$ 61,553.55

**Carmel/Clay Board of Parks and Recreation
Board Meeting Agenda Item**

<small>PRESENTER</small> Linus Rude, Secretary	<small>ACTION REQUESTED</small> Approval
<small>ITEM/SUBJECT</small> May 14, 2024 Park Board Meeting Minutes	
<small>DOLLAR AMOUNT / FUND</small> N/A	<small>MEETING DATE</small> June 11, 2024

SUMMARY:

A draft of the minutes for the May 14, 2024 Park Board Meeting is provided for additions or corrections.

STAFF RECOMMENDATION:

“I move to approve the minutes of the Park Board Meeting on May 14, 2024.”

Carmel/Clay Board of Parks and Recreation
Tuesday, May 14, 2024, 6:00 p.m.
John W. Hensel Government Center
10701 North College Avenue
Carmel, Indiana 46280

Member(s) Present: James Garretson, Judith Hagan, Joshua Kirsh, Jenn Kristunas, Linus Rude, Mark Westermeier, Lin Zheng

Member(s) Absent: Jonathan Blake, Katie Browning

Others Present: Michael Klitzing, Department Director/CEO; Kurtis Baumgartner, Department Assistant Director/COO; Eric Mehl, Administration & Planning Director/CAO; Brian Bosma, Park Board Attorney

Roll Call; Call to Order & Pledge of Allegiance

Board President Hagan welcomed everyone to the meeting and asked Mr. Rude to call the roll. Mr. Rude announced there was a quorum. Board President Hagan called the meeting to order at 6:04 p.m. followed by the Pledge of Allegiance.

Agenda Approval

Ms. Kristunas made a motion to approve the agenda, seconded by Mr. Rude, and passed unanimously 7 – 0.

Public Comments

There were no public comments.

Staff Reports

Assistant Director Baumgartner noted that Staff Reports were included in the Park Board packet.

Ms. Kristunas asked if the Adaptive 5K was still scheduled for this weekend, to which Assistant Director Baumgartner responded yes and added that he hoped for good weather.

Mr. Westermeier asked if there are any issues in opening The Waterpark. Assistant Director Baumgartner replied that there are some minor issues with the Lazy River. Mr. Westermeier asked about staffing. Assistant Director Baumgartner reported that all seasonal staffing looks very good for the start of summer, and staff will continue to evaluate as the season progresses.

Finance Committee

Ms. Zheng stated that the Finance Committee did not meet last month. Assistant Director Baumgartner indicated that he and Director Klitzing had a good meeting with the new CFO for the City. Assistant Director Baumgartner plans to have a Committee meeting in July to discuss 2025 budget proposals.

Consent Agenda

Discussion occurred regarding the Consent Agenda with guidance provided by Mr. Bosma.

Ms. Kristunas made a motion to approve the Consent Agenda **with the exception of Monetary Gifts, Grants, Partnerships, and Sponsorships**, seconded by Mr. Kirsh, and passed unanimously 7 – 0.

Consent Agenda (continued)

Minutes

April 9, 2024 Park Board Meeting Minutes

Financial Reports

Consolidated Financial Report for March 2024

CCPR P&L Statements for April 2024

Claims

Claim Sheet May 14, 2024

Clay Township Claim Sheet May 14, 2024

CCPR Payroll for April 5, 2024 and April 19, 2024

Monetary Gifts, Grants, Partnerships, and Sponsorships for May 2024

Mr. Mehl reported four monetary contributions: two donations of \$100 each from an anonymous donor for staff appreciation; one grant of \$4,200 from the Carmel Clay Parks Foundation (originally received from Duke Energy Foundation); and one sponsorship of \$500 from Scenthound Indiana for dog pot stations along the Monon Greenway.

Mr. Kirsh made a motion to accept the items as presented, seconded by Mr. Rude, and passed unanimously 7 – 0.

New Business

Indoor Aquatics Waterslide Staircase Refurbishing Proposal

Assistant Director Baumgartner gave a detailed overview of the proposed plans to refurbish the indoor aquatics waterslide staircase.

Ms. Kristunas made a motion to authorize the refurbishing of the indoor aquatics waterslide staircase at the Monon Community Center and accept the quote provided by PlayPros in the amount of \$130,000, through Special Purchasing under IC 5-22, seconded by Mr. Kirsh, and passed unanimously 7 – 0.

Bids for the Monon Community Center Indoor Playground

Assistant Director Baumgartner gave a detailed overview of the two bids received for the indoor playground construction. The lower bidder did not meet the bid requirements and was deemed “non-responsive.” Therefore, staff recommended the contract be awarded to the next bidder.

Mr. Kirsh made a motion to authorize the bid from and award a contract to RL Turner in the amount of \$1,286,000 for demolition and construction services of the Indoor Playground at the Monon Community Center, and authorize the Director, the Assistant Director, and the Park Board Legal Counsel to take all actions necessary to complete the contracting process.

Mr. Kirsh continued with a second motion to delegate to the Director and Assistant Director the authority to determine, in conjunction with the Engineer, whether it is in the best interest of the Board and the Department to add or change an item or items in the contract with RL Turner and to approve each change order in an amount not to exceed his purchasing authority and in accordance with applicable Indiana Law regarding change orders with a report to and ratification by the Park Board at a subsequent meeting.

The motions were seconded by Ms. Kristunas and passed unanimously 7 – 0.

Direct Purchase of Luckey Climber for Monon Community Center Indoor Playground

Assistant Director Baumgartner gave a detailed overview of the proposed playground structure from Luckey Climber.

Ms. Kristunas asked staff to confirm that the slides and playground structures were going to connect without issues. Mr. Mehl stated that they are confident there will be no issues. He explained that both companies have been working together throughout the design process and will be coordinating their teams for the installation. Discussion followed.

Mr. Kirsh made a motion to authorize the direct purchase of an indoor climbing structure feature from Luckey Climber LLC in the amount not to exceed \$972,000 and authorize the Director, the Assistant Director, and the Park Board Legal Counsel to take all actions necessary to complete the contracting process through Special Purchasing IC 5-22-10-13, seconded by Ms. Kristunas, and passed unanimously 7 – 0.

Direct Purchase of Indoor Playground Slides

Assistant Director Baumgartner gave a detailed overview of the proposed playground slides from Natural Structures.

Ms. Kristunas asked if there was any concern about the temperature of indoor stainless-steel slides. Director Klitzing explained that studies have shown that fully enclosed stainless-steel slides are actually cooler than most plastic ones when outdoors.

Mr. Kirsh made a motion under IC 5-22-10-13 to authorize the direct purchase of two stainless steel slides from Natural Structures in the amount not to exceed \$197,133 and authorize the Director, the Assistant Director, and the Park Board Legal Counsel to take all actions necessary to complete the contracting process, seconded by Ms. Kristunas, and passed unanimously 7 – 0.

Old Business

There was no Old Business.

Attorney's Report

Mr. Bosma indicated he had nothing of significance to report.

Director's Report

Director Klitzing provided an update on current projects including discussions with Clay Township regarding leasing office space for ESE.

Director Klitzing spoke about the Impact Fee ordinance meeting on May 20, 2024. The City Council will review the proposed Zone Improvement Plan on June 2, 2024. If approved, the Impact Fee amount will be increased.

Director Klitzing announced that he will be heading to Germany on May 17, 2024; this will be the first overseas CAPRA visitation.

Information Items

Plan Commission

Mr. Kirsh said he had nothing to report.

School Board

There was no School Board report in Ms. Browning’s absence.

Park Foundation

The Foundation is expecting a \$10,000 grant from the Indiana Greenways for the White River Greenway projects.

Climate Action Plan Advisory Committee

Mr. Mehl reported that the Committee was impressed with the Guaranteed Energy Savings Contract for the Monon Community Center and would like to see more City buildings do the same.

Park Board Comments / Discussion

There were no comments or additional discussion.

Workshop

The Park Board meeting was recessed at 6:42 p.m. for a five-minute break prior to the start of the Park Board Workshop. Board President Hagan stated that the live feed and video recording would be stopped, but the public could remain in attendance.

Discussion during the Workshop included a detailed look at possible future strategic funding processes as well as becoming a Special Taxing District for bonding and/or seeking Special Legislation from the State. Director Klitzing provided a history of the Department’s previous capital funding. He also reported on the two main potential solutions, along with opinion reports from outside consultants. The Park Board expressed support of Department staff to continue exploring these potential solutions.

Adjournment

Ms. Kristunas made a motion to adjourn the meeting, seconded by Mr. Rude, and without objections Board President Hagan adjourned the meeting at 8:00 p.m.

Approved,

Signature

Date

Signature

Date

Meetings of the Carmel/Clay Board of Parks and Recreation are recorded and may be viewed at <https://vimeo.com/channels/parkboardmeetings> or see the archive of meeting recordings at <https://www.carmelclayparks.com/about-us/park-board/>.

**Carmel/Clay Board of Parks and Recreation
Board Meeting Agenda Item**

PRESENTER Lin Zheng, Treasurer	ACTION REQUESTED Acknowledgement
ITEM/SUBJECT Consolidated Financial Report for April 2024	
DOLLAR AMOUNT / FUND N/A	MEETING DATE June 11, 2024

SUMMARY:

Provided is the Consolidated Financial Report for April 2024.

STAFF RECOMMENDATION:

“I move to acknowledge receipt of the Consolidated Financial Report for April 2024.”

**CARMEL CLAY PARKS & RECREATION
2024 YEAR-TO-DATE CONSOLIDATED FINANCIAL REPORT**

Month: April 2024

	(101) General	(103-CITY) Capital	(103-LIT) Capital	(106) Impact Fee	(108) ESE	(109) MCC	(110) Rec Facilities	(853) Gift	(Twp 1215) LIT Capital	CONSOLIDATED TOTAL
REVENUES										
City of Carmel	\$8,047,425.92	\$519,000.00	\$0.00	\$0.00	\$0.00	\$0.00	\$0.00	\$0.00	\$0.00	\$8,566,425.92
Clay Township	\$0.00	\$0.00	\$1,122,109.68	\$0.00	\$0.00	\$0.00	\$0.00	\$0.00	\$0.00	\$1,122,109.68
Impact Fees	\$0.00	\$0.00	\$0.00	\$375,598.00	\$0.00	\$0.00	\$0.00	\$0.00	\$0.00	\$375,598.00
User Fees, Interest & Other Earned Income	\$0.00	\$4,125.90	\$45,506.15	\$42,026.06	\$1,891,403.92	\$1,944,193.83	\$58,153.16	\$8,078.85	\$22,444.22	\$4,015,932.09
Total Revenues (a)	\$8,047,425.92	\$523,125.90		\$417,624.06	\$1,891,403.92	\$1,944,193.83	\$58,153.16	\$8,078.85	\$22,444.22	\$14,080,065.69
OTHER FINANCING SOURCES										
Cash Reserves as of 12/31/2022	\$0.00	\$116,300.13	\$4,710,609.86	\$4,262,667.44	\$3,690,718.01	\$4,650,483.52	\$315,021.17	\$119,280.78	\$1,549,047.34	\$19,414,128.25
Previous Year Encumbrances	\$181,018.18	\$0.00	\$0.00	\$0.00	\$0.00	\$0.00	\$0.00	\$0.00	\$0.00	\$181,018.18
Reimbursements	\$0.00	\$0.00	\$0.00	\$0.00	\$0.00	\$0.00	\$0.00	\$0.00	\$0.00	\$0.00
Transfers from Cash Change Fund	\$0.00	\$0.00	\$0.00	\$0.00	\$0.00	\$0.00	\$0.00	\$0.00	\$0.00	\$0.00
Gift Card Sales & Customer Overpayments	\$0.00	\$0.00	\$0.00	\$0.00	\$0.00	\$0.00	\$0.00	\$0.00	\$0.00	\$0.00
Total Other Financing Sources	\$181,018.18	\$116,300.13	\$4,710,609.86	\$4,262,667.44	\$3,690,718.01	\$4,650,483.52	\$315,021.17	\$119,280.78	\$1,549,047.34	\$19,595,146.43
Total Revenues & Other Financing Sources (b)	\$8,228,444.10	\$639,426.03	\$5,878,225.69	\$4,680,291.50	\$5,582,121.93	\$6,594,677.35	\$373,174.33	\$127,359.63	\$1,571,491.56	\$33,675,212.12
OPERATING EXPENSES										
<i>Transfer Out</i>	\$519,000.00									
Personal Services	\$1,102,665.23	\$0.00	\$0.00	\$0.00	\$883,700.82	\$911,607.73	\$0.00	\$0.00	\$0.00	\$2,897,973.78
Supplies	\$62,865.45	\$0.00	\$0.00	\$0.00	\$103,238.52	\$114,813.36	\$11,848.81	\$0.00	\$0.00	\$292,766.14
Other Services & Charges	\$545,267.75	\$0.00	\$0.00	\$0.00	\$193,304.58	\$943,614.02	\$74,967.10	\$0.00	\$0.00	\$1,757,153.45
Capital Outlay	\$2,106.24	\$0.00	\$0.00	\$0.00	\$3,842.22	\$15,902.13	\$0.00	\$0.00	\$0.00	\$21,850.59
Total Operating Expenses (c)	\$2,231,904.67	\$0.00	\$0.00	\$0.00	\$1,184,086.14	\$1,985,937.24	\$86,815.91	\$0.00	\$0.00	\$4,969,743.96
DEVELOPMENT & OTHER EXPENSES										
Capital Development & Maintenance	\$0.00	\$2,423.00	\$1,535,996.70	\$1,983,311.61	\$0.00	\$107,000.00	\$0.00	\$1,643.18	\$288,424.32	\$3,918,798.81
Transfers to Cash Change Fund	\$0.00	\$0.00	\$0.00	\$0.00	\$0.00	\$15,400.00	\$0.00	\$0.00	\$0.00	\$15,400.00
Gift Card & Customer Credit Transfers	\$0.00	\$0.00	\$0.00	\$0.00	\$0.00	\$1,130.00	\$0.00	\$0.00	\$0.00	\$1,130.00
Total Development & Other Expenses	\$0.00	\$2,423.00	\$1,535,996.70	\$1,983,311.61	\$0.00	\$123,530.00	\$0.00	\$1,643.18	\$288,424.32	\$3,935,328.81
Total Expenses (d)	\$2,231,904.67	\$2,423.00	\$1,535,996.70	\$1,983,311.61	\$1,184,086.14	\$2,109,467.24	\$86,815.91	\$1,643.18	\$288,424.32	\$8,905,072.77
ENCUMBRANCES & RESERVES										
Encumbrances & Dedicated Funds	\$0.00	\$637,003.03	\$4,342,228.99	\$2,696,979.89	\$0.00	\$0.00	\$0.00	\$0.00	\$1,283,067.24	\$8,959,279.15
Designated Gifts	\$0.00	\$0.00	\$0.00	\$0.00	\$0.00	\$0.00	\$0.00	\$112,463.10	\$0.00	\$112,463.10
Outstanding Liabilities	\$0.00	\$0.00	\$0.00	\$0.00	\$0.00	\$0.00	\$0.00	\$0.00	\$0.00	\$0.00
Non-Reverting Operations Reserve	\$0.00	\$0.00	\$0.00	\$0.00	\$3,098,035.79	\$1,000,000.00	\$0.00	\$0.00	\$0.00	\$4,098,035.79
Capital Maintenance Reserve	\$0.00	\$0.00	\$0.00	\$0.00	\$0.00	\$1,835,210.11	\$236,358.42	\$0.00	\$0.00	\$2,071,568.53
Cash Flow Reserve	\$0.00	\$0.00	\$0.00	\$0.00	\$1,300,000.00	\$1,650,000.00	\$50,000.00	\$0.00	\$0.00	\$3,000,000.00
Total Encumbrances & Reserves	\$0.00	\$637,003.03	\$4,342,228.99	\$2,696,979.89	\$4,398,035.79	\$4,485,210.11	\$286,358.42	\$112,463.10	\$1,283,067.24	\$18,241,346.57
Total Expenses, Encumbrances & Reserves (e)	\$2,231,904.67	\$639,426.03	\$5,878,225.69	\$4,680,291.50	\$5,582,121.93	\$6,594,677.35	\$373,174.33	\$114,106.28	\$1,571,491.56	\$27,146,419.34
Net Income (a - c)	n/a	n/a	n/a	n/a	\$707,317.78	(\$41,743.41)	(\$28,662.75)	n/a	n/a	n/a
<i>Cost Recovery (a + c)</i>					160%	98%	67%			
Current Cash Balance & Investments (b - d)	n/a	\$637,003.03	\$4,342,228.99	\$2,696,979.89	\$4,398,035.79	\$4,485,210.11	\$286,358.42	\$125,716.45	\$1,283,067.24	\$18,254,599.92
Unencumbered or Undedicated Funds (b - e)	\$5,996,539.43	\$0.00	\$0.00	\$0.00	\$0.00	\$0.00	\$0.00	\$13,253.35	\$0.00	\$6,009,792.78

**Carmel/Clay Board of Parks and Recreation
Board Meeting Agenda Item**

<small>PRESENTER</small> Kurtis Baumgartner, Assistant Director of Parks and Recreation/COO	<small>ACTION REQUESTED</small> Acknowledgement
<small>ITEM/SUBJECT</small> CCPR P&L Statements for May 2024	
<small>DOLLAR AMOUNT/FUND</small> N/A	<small>MEETING DATE</small> June 11, 2024

SUMMARY:

Provided for your review are May 2024 P&L statements for ESE (Fund 108), Monon Community Center (Fund 109), and Parks & Rec Facilities (Fund 110) as generated by the Department’s QuickBooks software. These reports are used as a management tool to help identify and track the financial performance of the Department’s retail-oriented operations. The P&L statements are supplemental information and do not replace the official financial records maintained by the Controller.

RECOMMENDED MOTION:

“I move to acknowledge receipt of the P&L Statements for May 2024.”

Extended School Enrichment - Carmel Clay Parks & Recreation

108 ESE Profit & Loss Prev Year Comparison

January through May 2024

06/06/24

Accrual Basis

	Jan - May 24	Jan - May 23	\$ Change
Ordinary Income/Expense			
Income			
0300000 · REVENUES			
0345040 · Park Department Fees	2,872,052.75	2,292,560.93	579,491.82
0361030 · Interest on Sweep	40,460.57	51,001.48	-10,540.91
Total 0300000 · REVENUES	2,912,513.32	2,343,562.41	568,950.91
Total Income	2,912,513.32	2,343,562.41	568,950.91
Gross Profit	2,912,513.32	2,343,562.41	568,950.91
Expense			
4100000 · PERSONAL SERVICES			
4110000 · Full Time Regular	549,125.62	389,355.28	159,770.34
4111000 · Part Time	390,953.74	297,823.19	93,130.55
4112000 · Overtime	17,041.94	11,018.52	6,023.42
4120000 · Deferred Compensation	11,832.34	14,579.30	-2,746.96
4121000 · Employer's Share of FICA	56,557.85	41,052.77	15,505.08
4122000 · Employer's Share of H-Ins	183,162.44	137,463.81	45,698.63
4122100 · Disability Insurance	1,012.34	800.79	211.55
4122200 · Life Insurance	458.80	366.30	92.50
4123002 · Civilian PERF	74,792.55	55,012.75	19,779.80
4124000 · Employer's Share of Medicare	13,218.23	9,601.12	3,617.11
Total 4100000 · PERSONAL SERVICES	1,298,155.85	957,073.83	341,082.02
4200000 · SUPPLIES			
4230100 · Stationary & Printing Materials	2,902.50	952.50	1,950.00
4230200 · Office Supplies	8,963.86	2,499.34	6,464.52
4239012 · Safety Supplies	5,723.71	0.00	5,723.71
4239039 · General Program Supplies	67,936.54	49,940.69	17,995.85
4239040 · Food & Beverages	66,543.40	54,101.70	12,441.70
4239099 · Other Miscellaneous	13,542.94	20,453.66	-6,910.72
Total 4200000 · SUPPLIES	165,612.95	127,947.89	37,665.06
4300000 · OTHER SERVICES & CHARGES			
4340000 · Legal Expense	3,508.75	2,145.00	1,363.75
4340400 · Consulting Fees	3,527.67	0.00	3,527.67
4340700 · Medical Fees (Drug Tests)	400.00	108.00	292.00
4340800 · Program Contractors	10,061.42	8,238.75	1,822.67
4341955 · Info Sys Maint/Contracts	18,617.40	17,929.14	688.26
4341990 · Criminal Background Checks	2,516.00	1,554.00	962.00
4341991 · Marketing & Promotions	2,857.67	19,715.57	-16,857.90
4341999 · Other Professional Fees	78,990.09	69,350.97	9,639.12
4343000 · Travel Fees & Expenses	3,786.05	1,820.07	1,965.98
4343006 · Bus Trips	2,700.88	812.33	1,888.55
4343007 · Field Trips	17,983.16	12,370.22	5,612.94
4344100 · Cellular Phone Fees	9,387.62	7,770.70	1,616.92
4345000 · Printing (Not Office Supplies)	2,325.00	408.00	1,917.00
4346000 · Classified Advertising	14,739.94	3,838.15	10,901.79
4350000 · Equipment Repairs & Maint.	5,119.42	9,093.71	-3,974.29
4350900 · Other Cont. Services	31,945.63	1,419.45	30,526.18
4353004 · Copier	1,750.54	1,374.88	375.66
4355200 · Subscriptions	1,742.10	1,387.84	354.26
4355300 · Organization & Membership Dues	3,381.00	900.00	2,481.00
4356004 · Staff Clothing	31,432.75	43,363.25	-11,930.50
4356005 · Participant Clothing	420.00	0.00	420.00
4357003 · Internal Instruction Fees	6,047.75	2,323.50	3,724.25
4357004 · External Instructional Fees	12,691.77	7,616.48	5,075.29

8:55 AM

06/06/24

Accrual Basis

Extended School Enrichment - Carmel Clay Parks & Recreation
108 ESE Profit & Loss Prev Year Comparison
January through May 2024

	Jan - May 24	Jan - May 23	\$ Change
4358400 · Refunds, Awards & Indemnities	1,838.00	3,496.40	-1,658.40
4359000 · Special Projects	976.70	123.85	852.85
Total 4300000 · OTHER SERVICES & CHARGES	268,747.31	217,160.26	51,587.05
Total Expense	1,732,516.11	1,302,181.98	430,334.13
Net Ordinary Income	1,179,997.21	1,041,380.43	138,616.78
Other Income/Expense			
Other Expense			
4460000 · CAPITAL OUTLAY			
4463200 · Computer Equipment	7,097.07	0.00	7,097.07
4463202 · Software	0.00	2,638.68	-2,638.68
Total 4460000 · CAPITAL OUTLAY	7,097.07	2,638.68	4,458.39
Total Other Expense	7,097.07	2,638.68	4,458.39
Net Other Income	-7,097.07	-2,638.68	-4,458.39
Net Income	1,172,900.14	1,038,741.75	134,158.39

Monon Community Center - Carmel Clay Parks & Recreation

06/06/24

109 MCC Profit & Loss Prev Year Comparison

Accrual Basis

January through May 2024

	Jan - May 24	Jan - May 23	\$ Change
Ordinary Income/Expense			
Income			
0300000 · REVENUES			
313000 · Sales Tax Collected	6,027.06	6,547.52	-520.46
345040 · Park Department Fees	66,301.00	58,417.75	7,883.25
346020 · Facility Rentals	3,418.24	9,284.85	-5,866.61
346025 · Shelter Rentals	47,885.62	46,590.99	1,294.63
346030 · Food Services Revenue	13,621.38	12,198.44	1,422.94
346040 · Aquatics Programs	73,165.00	69,829.24	3,335.76
346050 · Fitness Programs	127,505.00	102,788.00	24,717.00
346110 · Therapeutic Rec Programs	33,550.00	32,270.00	1,280.00
346115 · Annual Passes	16,823.84	17,478.00	-654.16
346116 · GS Corp Annual Passes	5,091.00	4,707.00	384.00
346120 · Season Passes	27,152.00	25,614.00	1,538.00
346125 · Monthly Passes	1,815,679.50	1,687,780.18	127,899.32
346130 · GS Corp Monthly Passes	86,825.82	86,730.45	95.37
346135 · Value Passes	18,532.00	19,042.30	-510.30
346140 · Daily Passes	208,399.00	204,623.00	3,776.00
346145 · Contractor Commissions	7,286.73	5,668.28	1,618.45
346150 · Merchandise Sales	848.00	633.00	215.00
360010 · Miscellaneous Revenues	6,257.15	3,902.23	2,354.92
361030 · Interest on Sweep	45,912.14	63,601.50	-17,689.36
367000 · Contributions & Gifts	45.14	78.90	-33.76
Total 0300000 · REVENUES	2,610,325.62	2,457,785.63	152,539.99
Total Income	2,610,325.62	2,457,785.63	152,539.99
Gross Profit	2,610,325.62	2,457,785.63	152,539.99
Expense			
4100000 · PERSONAL SERVICES			
4110000 · Full Time Regular	382,297.77	330,183.42	52,114.35
4111000 · Part Time	658,548.58	462,539.39	196,009.19
4112000 · Overtime	1,189.02	855.28	333.74
4120000 · Deferred Compensation	26,686.15	21,058.08	5,628.07
4121000 · Employer's Share of FICA	62,790.68	47,723.96	15,066.72
4122000 · Employer's Share of H-Ins	116,379.98	94,795.03	21,584.95
4122100 · Disability Insurance	723.91	692.63	31.28
4122200 · Life Insurance	288.60	292.30	-3.70
4123002 · Civilian PERF	53,938.02	45,994.86	7,943.16
4124000 · Employer's Share of Medicare	14,684.84	11,161.38	3,523.46
Total 4100000 · PERSONAL SERVICES	1,317,527.55	1,015,296.33	302,231.22
4200000 · SUPPLIES			
4230100 · Stationary & Printing Materials	200.00	455.00	-255.00
4230200 · Office Supplies	2,111.77	3,928.67	-1,816.90
4235000 · Building Materials	27,109.37	2,614.45	24,494.92
4237000 · Repair Parts	27,601.43	8,359.78	19,241.65
4238000 · Small Tools & Minor Equipment	5,169.59	100.00	5,069.59
4238900 · Cleaning & Maint. Supplies	72,528.14	92,136.90	-19,608.76
4239012 · Safety Supplies	7,148.17	5,761.09	1,387.08
4239039 · General Program Supplies	25,635.76	38,237.83	-12,602.07
4239040 · Food & Beverages	14,174.32	7,501.21	6,673.11
4239045 · Retail Goods	1,816.65	1,862.00	-45.35
4239099 · Other Miscellaneous	4,151.13	7,029.69	-2,878.56
Total 4200000 · SUPPLIES	187,646.33	167,986.62	19,659.71

Monon Community Center - Carmel Clay Parks & Recreation

109 MCC Profit & Loss Prev Year Comparison

January through May 2024

06/06/24

Accrual Basis

	Jan - May 24	Jan - May 23	\$ Change
4300000 · OTHER SERVICES & CHARGES			
4340000 · Legal Fees	2,208.00	13,626.50	-11,418.50
4340400 · Consulting Fees	5,087.67	0.00	5,087.67
4340700 · Medical Fees (Drug Tests)	579.00	193.00	386.00
4340800 · Program Contractors	38,634.00	18,290.00	20,344.00
4341955 · Info Sys Maint/Contracts	37,317.20	39,276.14	-1,958.94
4341990 · Criminal Background Checks	1,905.50	1,628.00	277.50
4341991 · Marketing & Promotions	67,876.10	65,856.21	2,019.89
4341999 · Other Professional Fees	105,721.19	108,509.93	-2,788.74
4343000 · Travel Fees & Expenses	405.39	1,001.37	-595.98
4344000 · Telephone Line Charges	958.45	6,068.28	-5,109.83
4344100 · Cellular Phone Fees	1,175.20	900.20	275.00
4345000 · Printing (Not Office Supplies)	8,682.00	5,180.00	3,502.00
4346000 · Classified Advertising	13,561.03	3,624.28	9,936.75
4347500 · General Insurance	182,054.00	148,437.57	33,616.43
4348000 · Electricity	132,168.85	191,317.77	-59,148.92
4348500 · Water & Sewer	25,846.44	26,536.45	-690.01
4349000 · Gas	35,984.10	53,565.19	-17,581.09
4349500 · Cable Service	1,231.20	1,310.95	-79.75
4350000 · Equipment Repairs & Maint.	58,359.96	47,703.31	10,656.65
4350100 · Building Repairs & Maint.	160,887.80	54,333.19	106,554.61
4350101 · Trash Collection	8,489.99	5,398.14	3,091.85
4350400 · Grounds Maintenance	15,065.25	18,053.00	-2,987.75
4350600 · Cleaning Services	148,566.85	117,850.00	30,716.85
4350900 · Other Cont. Services	49,907.31	16,767.15	33,140.16
4351000 · Auto Repairs & Maintenance	1,497.25	0.00	1,497.25
4353004 · Copier	1,928.82	1,688.98	239.84
4353099 · Other Rental & Leases	4,220.10	4,585.40	-365.30
4355200 · Subscriptions	15,460.44	9,244.54	6,215.90
4355300 · Organization & Membership Dues	1,280.00	760.00	520.00
4356004 · Staff Clothing	13,503.43	12,866.76	636.67
4357004 · External Instructional Fees	11,960.99	15,293.48	-3,332.49
4358300 · Other Fees & Licenses	7,298.00	6,509.00	789.00
4358400 · Refunds, Awards & Indemnities	3,346.48	1,087.00	2,259.48
4359000 · Special Projects	981.94	1,413.85	-431.91
Total 4300000 · OTHER SERVICES & CHARGES	1,164,149.93	998,875.64	165,274.29
Total Expense	2,669,323.81	2,182,158.59	487,165.22
Net Ordinary Income	-58,998.19	275,627.04	-334,625.23
Other Income/Expense			
Other Expense			
4460000 · CAPITAL OUTLAY			
4462000 · Parks MC Admin,Structure Impmnt	151,117.73	0.00	151,117.73
4463200 · Computer Equipment	26,977.61	8,899.89	18,077.72
4463202 · Software	5,747.87	4,405.63	1,342.24
4463600 · Parks Equipment	0.00	3,160.00	-3,160.00
4460000 · CAPITAL OUTLAY - Other	0.00	0.00	0.00
Total 4460000 · CAPITAL OUTLAY	183,843.21	16,465.52	167,377.69
Total Other Expense	183,843.21	16,465.52	167,377.69
Net Other Income	-183,843.21	-16,465.52	-167,377.69
Net Income	-242,841.40	259,161.52	-502,002.92

8:54 AM

06/06/24

Accrual Basis

110 Parks & Rec Facilities - Carmel Clay Parks & Recreation
110 Parks & Rec Facilities Fund Profit & Loss to Prev Year
January through May 2024

	Jan - May 24	Jan - May 23	\$ Change
Ordinary Income/Expense			
Income			
345040 · Park Department Fees	46,249.00	45,712.00	537.00
346020 · Facility Rentals	40,209.00	37,750.00	2,459.00
360010 · Miscellaneous Revenues	1,906.06	1,885.50	20.56
361030 · Interest	2,941.60	3,615.06	-673.46
Total Income	<u>91,305.66</u>	<u>88,962.56</u>	<u>2,343.10</u>
Expense			
4200000 · SUPPLIES			
4237000 · Repair Parts	1,149.50	73.72	1,075.78
4238900 · Other Maintenance Supplies	5,999.74	2,520.00	3,479.74
4239099 · Other Miscellaneous	5,539.57	13,468.12	-7,928.55
Total 4200000 · SUPPLIES	<u>12,688.81</u>	<u>16,061.84</u>	<u>-3,373.03</u>
4300000 · OTHER SERVICES & CHARGES			
4341999 · Other Professional Fees	4,874.39	4,602.86	271.53
4344000 · Telephone Line Charges	1,030.23	4,372.22	-3,341.99
4347500 · General Insurance	25,045.00	19,091.00	5,954.00
4348000 · Electricity	7,494.16	10,694.31	-3,200.15
4348500 · Water & Sewer	2,706.08	2,002.35	703.73
4349000 · Gas	2,305.70	5,135.43	-2,829.73
4350100 · Building Repairs & Maint.	13,234.75	7,847.99	5,386.76
4350101 · Trash Collection	2,617.50	1,341.98	1,275.52
4350400 · Grounds Maintenance	6,829.82	3,289.10	3,540.72
4350600 · Cleaning Services	13,032.00	10,350.00	2,682.00
4350900 · Other Cont. Services	7,955.00	16,335.00	-8,380.00
4358400 · Refunds, Awards & Indemnities	0.00	17.80	-17.80
Total 4300000 · OTHER SERVICES & CHARGES	<u>87,124.63</u>	<u>85,080.04</u>	<u>2,044.59</u>
Total Expense	<u>99,813.44</u>	<u>101,141.88</u>	<u>-1,328.44</u>
Net Ordinary Income	<u>-8,507.78</u>	<u>-12,179.32</u>	<u>3,671.54</u>
Net Income	<u><u>-8,507.78</u></u>	<u><u>-12,179.32</u></u>	<u><u>3,671.54</u></u>

**Carmel/Clay Board of Parks and Recreation
Board Meeting Agenda Item**

<small>PRESENTER</small> Lin Zheng, Treasurer	<small>ACTION REQUESTED</small> Approval
<small>ITEM/SUBJECT</small> Claim Sheet June 11, 2024	
<small>DOLLAR AMOUNT / FUND</small> N/A	<small>MEETING DATE</small> June 11, 2024

SUMMARY:

Claim Sheet June 11, 2024 is included for additions or corrections.

STAFF RECOMMENDATION:

“I move to approve the Claim Sheet dated June 11, 2024.”

Carmel/Clay Board of Parks and Recreation
 Claim Sheet Fund 101 - General Fund
 June 11, 2024

Name	Amount	Account	Num	Memo
May 7 - Jun 3, 24				
Absorb Software Inc.	\$ 10,000.00	4341955 - Info Sys Maint/Contracts	INV00117151	4/29/24 Learning Management Software Licensing 2024-25
Ace - Pak Products Inc.	\$ 863.20	4238900 - Other Maintenance Supplies	A-12473	5/7/24 Park Cleaning Supplies
Ace - Pak Products Inc.	\$ 863.20	4238900 - Other Maintenance Supplies	A-12492	5/13/24 Park Cleaning Supplies
Acorn Naturalists	\$ 152.70	4239039 - General Program Supplies	471730A	4/23/24 Parks & Natural Resources Naturalist Program "Knee High" Supplies 2024
Acorn Naturalists	\$ 87.49	4239039 - General Program Supplies	471730A	4/23/24 Parks & Natural Resources Naturalist Program "Knee High" Supplies 2024
Advanced Turf Solutions, Inc.	\$ 1,382.00	4239000 - Miscellaneous Supplies	501174279	4/24/24 Parks & Natural Resources Herbicides & Seed Supplies
AES Indiana	\$ 58.21	4348000 - Electricity	200000046790 Apr'24	5/1/24 Flowing Well Park
AES Indiana	\$ 114.09	4348000 - Electricity	200000004288 Apr'24	5/3/24 Monon Greenway South Trailhead
AES Indiana	\$ 364.74	4348000 - Electricity	2000000323015 Apr'24	5/3/24 Flowing Well Park Restroom
Allen, Michael	\$ 50.00	4344100 - Cellular Phone Fees	Reimb	5/6/24 Cell Phone Fees Apr'24
Amazon	\$ 207.28	4239000 - Miscellaneous Supplies	1CM9-JM41-JPTJ	5/15/24 Parks & Natural Resources Herbicide Supplies
Amazon	\$ 54.99	4230200 - Office Supplies	1KRP-3KY6-M1DV	5/15/24 Midtown Plaza Game Supply Restock & Office Supplies
Amazon	\$ 75.96	4238900 - Other Maintenance Supplies	1KRP-3KY6-M1DV	5/15/24 Midtown Plaza Game Supply Restock & Office Supplies
Amazon	\$ 173.98	4238000 - Small Tools & Minor Equipment	1DDL-YN1T-M63T	5/15/24 Replacement Parts for Parks & Natural Resources Mobile Water Tanks
Aquatic Control	\$ 336.17	4350400 - Grounds Maintenance	240566	5/2/24 2024 Pond Maintenance Meadowlark Park - 2nd Installment
Aquatic Control	\$ 335.83	4350400 - Grounds Maintenance	240567	5/2/24 2024 Pond Maintenance West Park - 2nd Installment
Aquatic Control	\$ 340.83	4350400 - Grounds Maintenance	240564	5/2/24 2024 Pond Maintenance Bear Creek Park - 2nd Installment
Aquatic Control	\$ 498.00	4350400 - Grounds Maintenance	240565	5/2/24 2024 Pond Maintenance Central Park - 2nd Installment
Aquatic Control	\$ 1,027.66	4350400 - Grounds Maintenance	241530	5/16/24 Service - Rotary Fountain Pump Repairs
Automatic Supply	\$ 82.84	4237000 - Repair Parts	0015236530-001	4/29/24 Dog Park Irrigation Repair Parts
Berger, Kari	\$ 6.03	4343000 - Travel Fees & Expenses	Reimb	5/29/24 Mileage Reimbursement 4/22/24-5/28/24
Berger, Karl	\$ 14.94	4359000 - Special Projects	Reimb	5/29/24 Birthday Card for Mark Varnau
Blood Hound, Inc.	\$ 555.00	4350400 - Grounds Maintenance	658363	5/2/24 Private Utility Locate for Drainage Digging at Founders Park
Bulksay Fence Design, Inc.	\$ 100.00	4237000 - Repair Parts	259781	2/19/24 Westermeier Commons Fence Repair Parts
Carmel Clay Schools	\$ 2,569.05	4231400 - Gasoline	20243-PD5	5/2/24 Gasoline
Carmel Clay Schools	\$ 423.38	4231300 - Diesel Fuel	20243-PD5	5/2/24 Diesel Fuel
Carmel Utilities	\$ 355.48	4348500 - Water & Sewer	5324100000 Apr'24	5/8/24 Monon Greenway North Trailhead
Carmel Utilities	\$ 185.08	4348500 - Water & Sewer	7051300000 Apr'24	5/13/24 Administrative Office
Carmel Utilities	\$ 28.81	4348500 - Water & Sewer	7051300000 Apr'24	5/13/24 Parks & Natural Resources Office
Carmel Utilities	\$ 138.11	4348500 - Water & Sewer	3832000000 Apr'24	5/15/24 Monon Greenway South Trailhead
Carmel Utilities	\$ 370.98	4348500 - Water & Sewer	2224200000 Apr'24	5/17/24 Meadowlark Park
Carmel Utilities	\$ 31.37	4348500 - Water & Sewer	6548100000 Apr'24	5/15/24 Monon Boulevard Special Events
Carmel Utilities	\$ 298.58	4348500 - Water & Sewer	7316000000 Apr'24	5/13/24 Central Park Westermeier Commons
Carmel Utilities	\$ 279.61	4348500 - Water & Sewer	2214200000 Apr'24	5/13/24 City Center Restroom
Carmel Utilities	\$ 201.34	4348500 - Water & Sewer	2214200000 Apr'24	5/13/24 Monon Boulevard
Carmel Utilities	\$ 26.68	4348500 - Water & Sewer	2768100000 Apr'24	5/15/24 Midtown Plaza
Carmel Utilities	\$ 300.46	4348500 - Water & Sewer	1313100000 Apr'24	5/17/24 Carey Grove Park
Carmel Utilities	\$ 81.11	4348500 - Water & Sewer	2623000000 May'24	5/24/24 Flowing Well Park
Carmel Utilities	\$ 446.96	4348500 - Water & Sewer	2623000000 May'24	5/24/24 Founders Park
Carmel Utilities	\$ 20.67	4348500 - Water & Sewer	2623000000 May'24	5/24/24 Flowing Well Park
Carmel Utilities	\$ 89.01	4348500 - Water & Sewer	2623000000 May'24	5/24/24 River Heritage Park
Carmel Utilities	\$ 47.35	4348500 - Water & Sewer	2623000000 May'24	5/24/24 Hazel Landing Park
Carmel Utilities	\$ 897.64	4348500 - Water & Sewer	5200000000 May'24	5/24/24 West Park
Carmel Utilities	\$ 8.59	4348500 - Water & Sewer	5200000000 May'24	5/24/24 Bear Creek Park
Carmel Utilities	\$ 333.95	4348500 - Water & Sewer	5843000000 May'24	5/24/24 Inlow Park
Carmel Utilities	\$ 89.47	4348500 - Water & Sewer	8362300000 May'24	5/24/24 White River Greenway
Carmel Utilities	\$ 6.40	4348500 - Water & Sewer	2386200000 May'24	5/24/24 Cherry Tree Park
Carmel Welding	\$ 504.00	4238000 - Small Tools & Minor Equipment	468227	5/2/24 Parks & Natural Resources Grounds Equipment
CenterPoint Energy	\$ 31.56	4349000 - Gas	52318900 Apr'24	5/14/24 Parks & Natural Resources Office
CenterPoint Energy	\$ 56.76	4349000 - Gas	50099721 Apr'24	5/14/24 Administrative Offices
Cintas Corporation	\$ 759.44	4238900 - Other Maintenance Supplies	9271832318	5/14/24 Park Cleaning Supplies 4/29/24
Cintas Corporation	\$ 184.00	4238900 - Other Maintenance Supplies	1904854912	5/13/24 Park Cleaning Supplies 3/11/24
Constellation NewEnergy Gas Division, LLC	\$ 97.02	4349000 - Gas	4045900	5/29/24 Administrative Offices
Constellation NewEnergy Gas Division, LLC	\$ 64.06	4349000 - Gas	4045900	5/29/24 Parks & Natural Resources Offices
Corvus Janitorial Systems	\$ 2,548.25	4350600 - Cleaning Services	404191004-373	4/1/24 2024 Janitorial Services - Central Park Westermeier Commons
Corvus Janitorial Systems	\$ 383.00	4350600 - Cleaning Services	406191005-105	6/1/24 2024 Janitorial Services - Administrative Office
Corvus Janitorial Systems	\$ 246.00	4350600 - Cleaning Services	406191017-110	6/1/24 2024 Janitorial Services - Parks & Natural Resources Office

Carmel/Clay Board of Parks and Recreation
 Claim Sheet Fund 101 - General Fund
 June 11, 2024

Name	Amount	Account	Num	Memo
Duke Energy	\$ 77.44	4348000 - Electricity	910122730076 Apr'24	4/30/24 Monon Greenway Tunnel Lights
Duke Energy	\$ 437.20	4348000 - Electricity	910122730109 Apr'24	4/30/24 Founders Park
Duke Energy	\$ 15.21	4348000 - Electricity	910122730050 Apr'24	4/30/24 River Heritage Park
Duke Energy	\$ 75.61	4348000 - Electricity	910120366341 Apr'24	5/3/24 Meadowlark Park
Duke Energy	\$ 117.39	4348000 - Electricity	910121799437 Apr'24	5/3/24 City Center Restroom
Duke Energy	\$ 217.38	4348000 - Electricity	910121498403 Apr'24	5/9/24 Inlow Park
Duke Energy	\$ 15.78	4348000 - Electricity	910121498495 Apr'24	5/9/24 Bear Creek Park
Duke Energy	\$ 150.60	4348000 - Electricity	910123202576 Apr'24	4/30/24 Central Park Lagoon
Duke Energy	\$ 57.54	4348000 - Electricity	910123160581 Apr'24	4/30/24 Central Park 111th Street Entrance Roundabout Lights
Duke Energy	\$ 310.91	4348000 - Electricity	910121498213 Apr'24	5/10/24 Central Park Westermeyer Commons
Duke Energy	\$ 21.26	4348000 - Electricity	910121498453 Apr'24	5/20/24 Monon Greenway Pedestrian Bridge
Duke Energy	\$ 26.63	4348000 - Electricity	910122730034 Apr'24	5/20/24 Monon Greenway North Trailhead
Duke Energy	\$ 60.84	4348000 - Electricity	910121498312 May'24	5/30/24 Carey Grove Park
Duke Energy	\$ 120.80	4348000 - Electricity	910119806907 May'24	5/30/24 Monon Crossing Flashers
Duke Energy	\$ 19.74	4348000 - Electricity	910123164626 May'24	5/29/24 Central Park Street Lights
Duke Energy	\$ 174.00	4348000 - Electricity	910121498362 May'24	5/29/24 Parks & Natural Resources Offices
Duke Energy	\$ 44.68	4348000 - Electricity	910123198147 May'24	5/29/24 Central Park Shelter
Duke Energy	\$ 363.03	4348000 - Electricity	910121498263 May'24	5/29/24 Administrative Offices
Ellis Mechanical & Electrical	\$ 351.77	4350100 - Building Repairs & Maint.	24043	2/29/24 2024 Administrative Office HVAC Preventative Maintenance Spring'24
Ellis Mechanical & Electrical	\$ 351.77	4350100 - Building Repairs & Maint.	24043	2/29/24 2024 Parks & Natural Resources Office HVAC Preventative Maintenance Spring'24
Ellis Mechanical & Electrical	\$ 152.25	4350100 - Building Repairs & Maint.	24037	2/29/24 2024 West Park HVAC Preventative Maintenance QTR 1
Ellis Mechanical & Electrical	\$ 4,105.20	4350100 - Building Repairs & Maint.	240412	5/22/24 Service - Central Park Westermeyer Commons Meter Install
Ellis Mechanical & Electrical	\$ 257.38	4350100 - Building Repairs & Maint.	240662	5/22/24 Service - West Park Thermostat
Ellis Mechanical & Electrical	\$ 152.25	4350100 - Building Repairs & Maint.	24103	5/17/24 2024 West Park Mechanical Room HVAC Preventative Maintenance QTR 2
Enterprise Fleet Management	\$ 9,021.05	4353099 - Other Rental & Leases	FBN5031794	5/3/24 Fleet Lease Rentals May'24
Enterprise Fleet Management	\$ 15.00	4353099 - Other Rental & Leases	FBN5031794	5/3/24 Lease Vehicle #2242 Licensing
Environmental Laboratories, Inc.	\$ 13.88	4350900 - Other Cont. Services	20397331	5/7/24 Monthly Water Testing - Flowing Well
Environmental Laboratories, Inc.	\$ 33.00	4238900 - Other Maintenance Supplies	20398290	5/20/24 Weekly Water Testing - Inlow Splash Pad
Environmental Laboratories, Inc.	\$ 33.00	4238900 - Other Maintenance Supplies	20398290	5/20/24 Weekly Water Testing - Midtown Splash Pad
Garcia, Ingrid	\$ 25.00	4344100 - Cellular Phone Fees	Reimb	5/30/24 Cell Phone Fees May'23
Gordon Plumbing, Inc.	\$ 530.13	4350100 - Building Repairs & Maint.	299801	5/5/24 Service - Inlow Park Restroom Plumbing Repairs
Gordon Plumbing, Inc.	\$ 339.00	4350100 - Building Repairs & Maint.	300129	5/10/24 Service - Parks & Natural Resources Office Toilet
Grainger	\$ 221.70	4359000 - Special Projects	9115433337	5/10/24 Waterpark Parts
Grainger	\$ 195.72	4238900 - Other Maintenance Supplies	9127803022	5/22/24 Supplies for Traffic Counters & Park Restroom Amenities
Green Touch Services, Inc.	\$ 109.50	4350400 - Grounds Maintenance	146108	4/30/24 Landscape Maintenance Administrative Office
Green Touch Services, Inc.	\$ 45.00	4350400 - Grounds Maintenance	146217	4/30/24 Landscape Maintenance Bear Creek Park
Green Touch Services, Inc.	\$ 55.00	4350400 - Grounds Maintenance	146210	4/30/24 Landscape Maintenance Carey Grove Park
Green Touch Services, Inc.	\$ 75.00	4350400 - Grounds Maintenance	146109	4/30/24 Landscape Maintenance Central Dog Park
Green Touch Services, Inc.	\$ 1,615.00	4350400 - Grounds Maintenance	146030	4/30/24 Landscape Maintenance Central Park West
Green Touch Services, Inc.	\$ 235.00	4350400 - Grounds Maintenance	146031	4/30/24 Landscape Maintenance Central Park East
Green Touch Services, Inc.	\$ 126.00	4350400 - Grounds Maintenance	146111	4/30/24 Landscape Maintenance Central Park Westermeyer Commons
Green Touch Services, Inc.	\$ 165.00	4350400 - Grounds Maintenance	146026	4/30/24 Landscape Maintenance Flowing Well Park
Green Touch Services, Inc.	\$ 361.00	4350400 - Grounds Maintenance	145976	4/30/24 Landscape Maintenance Founders Park
Green Touch Services, Inc.	\$ 126.75	4350400 - Grounds Maintenance	146027	4/30/24 Landscape Maintenance Hagan-Burke Greenway
Green Touch Services, Inc.	\$ 125.00	4350400 - Grounds Maintenance	146216	4/30/24 Landscape Maintenance Inlow Park
Green Touch Services, Inc.	\$ 170.50	4350400 - Grounds Maintenance	146028	4/30/24 Landscape Maintenance Lenape Trace Park
Green Touch Services, Inc.	\$ 49.25	4350400 - Grounds Maintenance	146213	4/30/24 Landscape Maintenance Meadowlark Park
Green Touch Services, Inc.	\$ 1,320.00	4350400 - Grounds Maintenance	145975	4/30/24 Landscape Maintenance Monon Boulevard
Green Touch Services, Inc.	\$ 150.00	4350400 - Grounds Maintenance	146218	4/30/24 Landscape Maintenance Monon Central Core
Green Touch Services, Inc.	\$ 90.00	4350400 - Grounds Maintenance	146107	4/30/24 Landscape Maintenance Monon Greenway Central Trailhead
Green Touch Services, Inc.	\$ 20.00	4350400 - Grounds Maintenance	146212	4/30/24 Landscape Maintenance Monon Greenway North Trailhead
Green Touch Services, Inc.	\$ 20.00	4350400 - Grounds Maintenance	146211	4/30/24 Landscape Maintenance Monon Greenway South Trailhead
Green Touch Services, Inc.	\$ 125.50	4350400 - Grounds Maintenance	146029	4/30/24 Landscape Maintenance Monon Greenway Rotary Plaza
Green Touch Services, Inc.	\$ 25.00	4350400 - Grounds Maintenance	146214	4/30/24 Landscape Maintenance Monon Greenway Indot Bridge
Green Touch Services, Inc.	\$ 22.00	4350400 - Grounds Maintenance	146215	4/30/24 Landscape Maintenance Monon Greenway Carmel Drive Bridge
Green Touch Services, Inc.	\$ 48.00	4350400 - Grounds Maintenance	146219	4/30/24 Landscape Maintenance River Heritage Park
Green Touch Services, Inc.	\$ 855.00	4350400 - Grounds Maintenance	145974	4/30/24 Landscape Maintenance Perelman Pavilion
Green Touch Services, Inc.	\$ 360.00	4350400 - Grounds Maintenance	145977	4/30/24 Landscape Maintenance West Park

Carmel/Clay Board of Parks and Recreation
 Claim Sheet Fund 101 - General Fund
 June 11, 2024

Name	Amount	Account	Num	Memo
HP Inc.	\$ 733.00	4463200 - Computer Equipment	9018568142	5/2/24 Computer Equipment Replacement 2024
HP Inc.	\$ 3,905.00	4463200 - Computer Equipment	9018568142	5/2/24 Computer Equipment Replacement 2024
HP Inc.	\$ 9,102.00	4463200 - Computer Equipment	9018588883	5/8/24 Computer Equipment Replacement 2024
IndyAnna's Catering	\$ 662.50	4359000 - Special Projects	75087	4/8/24 Lunch for Staff Members Working Solar Eclipse Event 4/8/24
Insight Public Sector, Inc.	\$ 211.52	4341955 - Info Sys Maint/Contracts	1101163280	5/9/24 Software Subscription for Graphic Designer
InvigorateHR	\$ 433.34	4357004 - External Instructional Fees	1616	5/17/24 Employee Training Services & LMS E-Courses
Konica Minolta Business Solutions	\$ 341.63	4353004 - Copier	9009936867	5/17/24 Copier Charges Administrative Office 2/18/24-5/17/24
Kroger	\$ 144.69	4359000 - Special Projects	064239	4/3/24 2024 - Eclipse for CCPR Staff
Kroger	\$ 59.69	4359000 - Special Projects	100698	4/12/24 Snacks for Administration & Planning Quarterly Meeting 4/12/24
Kroger	\$ 39.56	4359000 - Special Projects	082737	4/18/24 Administration & Planning/Parks & Natural Resources Interdepartmental Luncheon 4/19/24
Kroger	\$ 90.53	4359000 - Special Projects	114151	4/19/24 Administration & Planning/Parks & Natural Resources Interdepartmental Luncheon 4/19/24
Landscape Forms, Inc.	\$ 578.28	4239000 - Miscellaneous Supplies	INV-143193	3/29/24 Inlow Park Playground Repair Parts
Magers Bookkeeping Services LLC	\$ 120.00	4341999 - Other Professional Fees	1170	5/28/24 2024 Bookkeeping Services
Menards	\$ 212.51	4238900 - Other Maintenance Supplies	308311524065458	4/24/24 Parks & Natural Resources Miscellaneous Supplies
Menards	\$ 205.80	4235000 - Building Materials	308312724029307	5/6/24 Electrical Supplies for North Trailhead AED Installation
Menards	\$ 23.43	4238000 - Small Tools & Minor Equipment	308312824013154	5/7/24 Parks & Natural Resources Miscellaneous Maintenance Supplies
Menards	\$ 121.93	4238900 - Other Maintenance Supplies	308312824013154	5/7/24 Parks & Natural Resources Miscellaneous Maintenance Supplies
Menards	\$ 51.40	4237000 - Repair Parts	308312824013154	5/7/24 Parks & Natural Resources Miscellaneous Maintenance Supplies
Menards	\$ 165.66	4235000 - Building Materials	308313024084853	5/9/24 AED Electrical Supplies for Monon North Trailhead Installation
Menards	\$ 39.11	4235000 - Building Materials	308313424071002	5/13/24 Central Park Westermeler Commons Repair Supplies
Metronet	\$ 762.25	4349500 - Cable Service	2196386 May24	5/2/24 Internet Service - Carey Grove Park and Install
Mid-State Truck Equipment	\$ 1,030.00	4353099 - Other Rental & Leases	127903	4/30/24 Aftermarket Equipment for New Lease Fleet Unit 2242
Mid-State Truck Equipment	\$ 50.86	4238000 - Small Tools & Minor Equipment	128033	5/15/24 Parks & Natural Resources Exmark Zero Turn Mower Maintenance Equipment
Mid-State Truck Equipment	\$ 706.45	4350000 - Equipment Repairs & Maint.	128028	5/14/24 Service - Parks & Natural Resources Mower Repair
Mountain Glacier, LLC	\$ 201.79	4350900 - Other Cont. Services	0900577745	5/13/24 Drinking Water Parks & Natural Resources/Administrative Office
Mr. B's Lawn Maintenance, Inc.	\$ 1,100.00	4350400 - Grounds Maintenance	10213	5/1/24 Parks Spring Cleanup 2024
Mr. B's Lawn Maintenance, Inc.	\$ 346.50	4350400 - Grounds Maintenance	10193	5/1/24 Turf Maintenance Bear Creek Park
Mr. B's Lawn Maintenance, Inc.	\$ 468.60	4350400 - Grounds Maintenance	10194	5/1/24 Turf Maintenance Bear Creek Greenway
Mr. B's Lawn Maintenance, Inc.	\$ 1,260.54	4350400 - Grounds Maintenance	10195	5/1/24 Turf Maintenance Carey Grove Park
Mr. B's Lawn Maintenance, Inc.	\$ 1,155.18	4350400 - Grounds Maintenance	10192	5/1/24 Turf Maintenance Central Bark Park
Mr. B's Lawn Maintenance, Inc.	\$ 3,230.60	4350400 - Grounds Maintenance	10195 B	5/1/24 Turf Maintenance Central Park
Mr. B's Lawn Maintenance, Inc.	\$ 1,118.60	4350400 - Grounds Maintenance	10196	5/1/24 Turf Maintenance Central Waterpark
Mr. B's Lawn Maintenance, Inc.	\$ 2,537.92	4350400 - Grounds Maintenance	10197	5/1/24 Turf Maintenance Cherry Tree Park
Mr. B's Lawn Maintenance, Inc.	\$ 977.68	4350400 - Grounds Maintenance	10198	5/1/24 Turf Maintenance Flowing Well Park
Mr. B's Lawn Maintenance, Inc.	\$ 1,474.16	4350400 - Grounds Maintenance	10199	5/1/24 Turf Maintenance Founders Park
Mr. B's Lawn Maintenance, Inc.	\$ 901.53	4350400 - Grounds Maintenance	10200	5/1/24 Turf Maintenance Hazel Landing Park
Mr. B's Lawn Maintenance, Inc.	\$ 1,441.34	4350400 - Grounds Maintenance	10201	5/1/24 Turf Maintenance Inlow Park
Mr. B's Lawn Maintenance, Inc.	\$ 975.15	4350400 - Grounds Maintenance	10202	5/1/24 Turf Maintenance Lenape Trace Park
Mr. B's Lawn Maintenance, Inc.	\$ 833.00	4350400 - Grounds Maintenance	10210	5/1/24 Turf Maintenance Thomas Marcuccilli Nature Park
Mr. B's Lawn Maintenance, Inc.	\$ 1,971.36	4350400 - Grounds Maintenance	10203	5/1/24 Turf Maintenance Meadowlark Park
Mr. B's Lawn Maintenance, Inc.	\$ 2,101.00	4350400 - Grounds Maintenance	10204	5/1/24 Turf Maintenance Monon Greenway
Mr. B's Lawn Maintenance, Inc.	\$ 923.88	4350400 - Grounds Maintenance	10204	5/1/24 Turf Maintenance Monon Boulevard
Mr. B's Lawn Maintenance, Inc.	\$ 741.00	4350400 - Grounds Maintenance	10205	5/1/24 Turf Maintenance Perelman Property/West Park
Mr. B's Lawn Maintenance, Inc.	\$ 518.21	4350400 - Grounds Maintenance	10206	5/1/24 Turf Maintenance Prairie Meadow Park
Mr. B's Lawn Maintenance, Inc.	\$ 1,999.14	4350400 - Grounds Maintenance	10207	5/1/24 Turf Maintenance River Heritage Park
Mr. B's Lawn Maintenance, Inc.	\$ 625.42	4350400 - Grounds Maintenance	10209	5/1/24 Turf Maintenance Steckley at Hazel Landing Park
Mr. B's Lawn Maintenance, Inc.	\$ 3,124.12	4350400 - Grounds Maintenance	10212	5/1/24 Turf Maintenance West Park
Mr. B's Lawn Maintenance, Inc.	\$ 879.92	4350400 - Grounds Maintenance	10211	5/1/24 Turf Maintenance Central Park Westermeler Commons
Mr. B's Lawn Maintenance, Inc.	\$ 998.18	4350400 - Grounds Maintenance	10208	5/1/24 Turf Maintenance White River Greenway
Mr. B's Lawn Maintenance, Inc.	\$ 216.30	4350400 - Grounds Maintenance	10224	5/1/24 Turf Chemical Maintenance Administrative Office
Mr. B's Lawn Maintenance, Inc.	\$ 381.10	4350400 - Grounds Maintenance	10227	5/1/24 Turf Chemical Maintenance Bear Creek Greenway
Mr. B's Lawn Maintenance, Inc.	\$ 416.93	4350400 - Grounds Maintenance	10214	5/1/24 Turf Chemical Maintenance Central Bark Park
Mr. B's Lawn Maintenance, Inc.	\$ 381.10	4350400 - Grounds Maintenance	10216	5/1/24 Turf Chemical Maintenance Central Park
Mr. B's Lawn Maintenance, Inc.	\$ 142.14	4350400 - Grounds Maintenance	10222	5/1/24 Turf Chemical Maintenance Central Park North Frontage
Mr. B's Lawn Maintenance, Inc.	\$ 381.10	4350400 - Grounds Maintenance	10215	5/1/24 Turf Chemical Maintenance Central Waterpark
Mr. B's Lawn Maintenance, Inc.	\$ 1,469.07	4350400 - Grounds Maintenance	10219	5/1/24 Turf Chemical Maintenance Founders Park
Mr. B's Lawn Maintenance, Inc.	\$ 276.04	4350400 - Grounds Maintenance	10221	5/1/24 Turf Chemical Maintenance Inlow Park
Mr. B's Lawn Maintenance, Inc.	\$ 570.00	4350400 - Grounds Maintenance	10226	5/1/24 Turf Chemical Maintenance Thomas Marcuccilli Nature Park

Carmel/Clay Board of Parks and Recreation
 Claim Sheet Fund 101 - General Fund
 June 11, 2024

Name	Amount	Account	Num	Memo
Mr. B's Lawn Maintenance, Inc.	\$ 216.30	4350400 - Grounds Maintenance	10225	5/1/24 Turf Chemical Maintenance Perelman Property/West Park
Mr. B's Lawn Maintenance, Inc.	\$ 448.05	4350400 - Grounds Maintenance	10223	5/1/24 Turf Chemical Maintenance West Park
Mr. B's Lawn Maintenance, Inc.	\$ 479.43	4350400 - Grounds Maintenance	10218	5/1/24 Turf Chemical Maintenance West Park - Jill's Hill
Mr. B's Lawn Maintenance, Inc.	\$ 390.41	4350400 - Grounds Maintenance	10217	5/1/24 Turf Chemical Maintenance Central Park Westermeier Commons
Mr. B's Lawn Maintenance, Inc.	\$ 468.65	4350400 - Grounds Maintenance	10220	5/1/24 Turf Chemical Maintenance Monon Greenway
Nature Watch	\$ 249.72	4239039 - General Program Supplies	195721A	4/23/24 Nature Keepers Program 2024 Supplies
NCSI National Center Safety Initiatives	\$ 37.00	4341990 - Criminal Background Checks	44800	5/1/24 Adult Volunteer Background Checks
NCSI National Center Safety Initiatives	\$ 370.00	4341990 - Criminal Background Checks	44799	5/1/24 New Hire & Annual Background Checks
NRPA	\$ 1,700.00	4355300 - Organization & Membership Dues	2024 Renewal	4/12/24 2024-25 Premier Agency Package Renewal
PFM Car & Truck Care Center	\$ 122.29	4351000 - Auto Repair & maintenance	400131934	4/29/24 Fleet Maintenance
PFM Car & Truck Care Center	\$ 49.59	4351000 - Auto Repair & maintenance	400131946	4/30/24 Fleet Maintenance
Ray Marketing powered by Proforma	\$ 79.70	4356004 - Staff Clothing	BR71004110A	3/30/24 Uniforms for Director Klitzing (2024 Annual)
Ray Marketing powered by Proforma	\$ 14.00	4356004 - Staff Clothing	BR71004137A	5/19/24 Staff Uniform Embroidery - 1st QTR 2024
Republic Services	\$ 476.77	4350101 - Trash Collection	0761-006447217	5/25/24 Trash & Recycling Services - Administrative Offices
Republic Services	\$ 517.11	4350101 - Trash Collection	0761-006443008	5/25/24 Trash & Recycling Services Central Park Westermeier Commons
Riches, Jyllan	\$ 41.36	4239039 - General Program Supplies	Reimb	5/13/24 Candy for CCPR Booth at Midtown Block Party
S & S Worldwide	\$ 178.60	4238900 - Other Maintenance Supplies	IN101381689	4/25/24 Midtown Plaza Game Resupply
Scat Pest Control	\$ 150.00	4350100 - Building Repairs & Maint.	351708	5/21/24 Administrative Office 2024 Pest Control Services
Sherwin Williams	\$ 144.84	4235000 - Building Materials	5253-8	5/15/24 Paint Supplies for Tunnels on the Monon Greenway Core
Staples	\$ 36.20	4230200 - Office Supplies	6002178672	5/6/24 Administrative & Revenue Coordinator Office Supplies
Staples	\$ 418.86	4230200 - Office Supplies	6002178673	5/6/24 Parks & Natural Resources Office Supplies
Staples	\$ 30.83	4230200 - Office Supplies	6001117200	4/8/24 Administrative - Office Inventory & Requested Supplies
Sunbelt Rental, Inc	\$ 107.75	4238000 - Small Tools & Minor Equipment	153751445-0001	5/6/24 Miscellaneous Supplies for Pedestrian Bridge Project
Sunbelt Rental, Inc	\$ 45.73	4353099 - Other Rental & Leases	153540259-0001	5/3/24 Rental Equipment for Central Park Westermeier Commons Cleaning
Terryberry	\$ 32.95	4350900 - Other Cont. Services	Q45429	5/14/24 Employee Recognition Gift
Terryberry	\$ 82.09	4350900 - Other Cont. Services	Q45428	5/14/24 Employee Recognition Gift
Terryberry	\$ 43.07	4350900 - Other Cont. Services	Q50512	5/28/24 Employee Recognition Gift
TriCo Regional Sewer Utility	\$ 73.45	4348500 - Water & Sewer	1001301 Apr'24	5/1/24 Monon Greenway South Trailhead
TriCo Regional Sewer Utility	\$ 20.12	4348500 - Water & Sewer	1013738 Apr'24	5/1/24 Administrative Offices
TriCo Regional Sewer Utility	\$ 35.18	4348500 - Water & Sewer	1033605 Apr'24	5/1/24 Central Park Westermeier Commons
TriCo Regional Sewer Utility	\$ 214.64	4348500 - Water & Sewer	1041839 Apr'24	5/1/24 Central Park Westermeier Commons
TriCo Regional Sewer Utility	\$ 296.46	4348500 - Water & Sewer	2000677 Apr'24	5/1/24 West Park
UKG Inc.	\$ 1,336.93	4350900 - Other Cont. Services	PRINVD452358	3/7/24 Payroll System Subscription Fees
Verizon Wireless	\$ 1,469.01	4344100 - Cellular Phone Fees	9962485939	4/23/24 Parks & Natural Resources Cell Phone Charges
Walmart	\$ 51.05	4239039 - General Program Supplies	074129644447457	5/8/24 Fishing Supplies for Parks & Natural Resources Nature Keepers Program
White's Ace Hardware	\$ 134.94	4235000 - Building Materials	29758579	4/15/24 Westermeier Commons Electrical Repair Supplies
White's Ace Hardware	\$ 37.96	4235000 - Building Materials	23758616	4/15/24 Westermeier Commons Electrical Repair Supplies
White's Ace Hardware	\$ 18.99	4235000 - Building Materials	29760081	4/18/24 Rotary Fountain Replacement Parts
White's Ace Hardware	\$ 17.15	4350400 - Grounds Maintenance	29763207	4/25/24 Supplies to Repair Irrigation at Central Core
White's Ace Hardware	\$ 9.14	4350400 - Grounds Maintenance	29763247	4/25/24 Supplies to Repair Irrigation at Central Core
White's Ace Hardware	\$ 133.46	4350400 - Grounds Maintenance	29765882	4/30/24 Cleaning Supplies for Central Park Westermeier Commons Playground
WISSCO Irrigation, Inc.	\$ 1,071.23	4350400 - Grounds Maintenance	EH220771	5/22/24 Founders Park Irrigation - Additional Repair 2024
WISSCO Irrigation, Inc.	\$ 656.99	4350400 - Grounds Maintenance	EH218834	5/22/24 Founders Park Irrigation 2024 and Additional Repairs
May 7 - Jun 3, 24	\$ 122,784.69			

Carmel/Clay Board of Parks and Recreation
Claim Sheet Fund 108 - Extended School Enrichment
June 11, 2024

Name	Amount	Account	Num	Memo
May 7 - Jun 3, 24				
Absorb Software Inc	\$ 8,982.00	4341955 - Info Sys Maint/Contracts	INV00117151	4/29/24 Learning Management Software Licensing 2024-25
AlphaCard	\$ 119.52	4230200 - Office Supplies	INV7308798	5/10/24 ESE - Name Badge Printer Supplies
Amazon	\$ 514.90	4346000 - Classified Advertising	13HN-GX6N-LP17	5/15/24 Seasonal & Part Time Summer Staff Supplies for Mix & Mingle Event 5/24/24
Amazon	\$ 192.84	4346000 - Classified Advertising	1KDL-PT11-MWTK	5/15/24 Seasonal & Part Time Summer Staff Supplies for Mix & Mingle Event 5/24/24
Amazon	\$ 34.34	4239039 - General Program Supplies	17N7-GFR6-KG14	5/15/24 Under the Sun Camp Supplies
Amazon	\$ 2,024.85	4239039 - General Program Supplies	11V4-XT4Y-M66V	5/15/24 STEAM Team Summer Camp Program Supplies
Amazon	\$ 343.92	4239039 - General Program Supplies	1KDL-PT11-LV9V	5/15/24 STEAM Team Summer Camp Activity Supplies
Amazon	\$ 79.77	4239099 - Other Miscellaneous	1XFJ-GXGF-LYWF	5/15/24 ESE Summer Camp Leadership Training & Staff Accommodations Supplies
Amazon	\$ 87.57	4239039 - General Program Supplies	11PK-9JJW-M6XC	5/15/24 Carmel Elementary ESE Cash Store Prizes
Amazon	\$ 93.43	4239039 - General Program Supplies	1DM3-611J-KG71	5/15/24 Clay Center ESE Program Supplies
Amazon	\$ 158.04	4239039 - General Program Supplies	17N7-GFR6-JFVP	5/15/24 The Summer Experience Camp Supplies
Amazon	\$ 66.45	4239039 - General Program Supplies	1D4P-9CDV-JVWC	5/15/24 The Summer Experience Camp Supplies
Amazon	\$ 422.61	4239039 - General Program Supplies	1QJG-KGPN-LKTF	5/15/24 Mohawk Trails ESE Program Supplies
Amazon	\$ 59.95	4239012 - Safety Supplies	1DDL-YN1T-LM77	5/15/24 ESE CPR Training Supplies
Amazon	\$ 183.74	4239039 - General Program Supplies	1J7R-7FH-F6XK	5/15/24 Summer Experience Summer Camp Supplies
Amazon	\$ 102.97	4239039 - General Program Supplies	1WM6-Y1XN-LX63	5/15/24 Camp Wayback Summer Camp Weeks 1-5 Supplies
Amazon	\$ 116.57	4239039 - General Program Supplies	1PLL-D94L-LMWP	5/15/24 Forest Dale ESE Prize Box Supplies
Amazon	\$ 45.50	4239099 - Other Miscellaneous	1DPM-7F17-KY7M	5/15/24 ESE Administration New Staff Office Supplies
Amazon	\$ 60.73	4230200 - Office Supplies	1GJG-736P-JLYN	5/15/24 ESE Administrative Office Supplies
Amazon	\$ 56.43	4239039 - General Program Supplies	17TM-KTTH-LL14	5/15/24 Clay Center ESE "Thank a Youth Worker 2024" Event Supplies
Amazon	\$ 275.99	4239039 - General Program Supplies	1D4P-9CDV-KFJK	5/15/24 Success on Stage Summer Camp Play Equipment
Amazon	\$ 106.22	4239039 - General Program Supplies	17N7-GFR6-KF9V	5/15/24 Kids at Play Summer Camp Program Supplies
Amazon	\$ 370.34	4239039 - General Program Supplies	11JJ-194J-M11M	5/15/24 Outdoor Explorers Summer Camp Supplies
Amazon	\$ 1,075.11	4239039 - General Program Supplies	1YNG-7GNN-MVQC	5/15/24 Chillville Summer Camp Supplies 2024
Amazon	\$ 116.99	4239099 - Other Miscellaneous	1VVR-FLG1-MFWH	5/15/24 ESE Site Program Equipment
American Red Cross	\$ 98.76	4239012 - Safety Supplies	29017378	5/16/24 ESE CPR Training Supplies
American Red Cross	\$ 532.00	4357004 - External Instructional Fees	22689184	5/15/24 ESE Staff CPR/First Aid Training 5/7/24
B & H Photo	\$ 89.10	4239039 - General Program Supplies	223751037	5/2/24 Woodbrook ESE Video Equipment
Blick Art Materials	\$ 245.54	4239039 - General Program Supplies	3021433	5/11/24 Adventures in Art Summer Camp Supplies
BluePay Processing, LLC	\$ 118.00	4341999 - Other Professional Fees	1005662456410424	4/30/24 ESE ACH Processing Apr'24
BluePay Processing, LLC	\$ 10,892.53	4341999 - Other Professional Fees	INV015130	5/16/24 ESE Credit Card Processing Apr'24
Booth Tarkington Civic Theatre	\$ 606.00	4343007 - Field Trips	CK Request	5/6/24 Success on Stage Field Trip on 6/25/24
Brainstorm Print	\$ 80.00	4346000 - Classified Advertising	144881	5/22/24 Hiring Promotion Banners
Buckingham, Tiffany	\$ 132.06	4343000 - Travel Fees & Expenses	Reimb	5/29/24 Mileage Reimbursement 2/7/24-5/16/24
Carmel Clay Schools Food & Nutrition	\$ 9,883.20	4239040 - Food & Beverages	45383	5/1/24 ESE Student Afterschool Snack Apr'24
Carmel Clay Schools Food & Nutrition	\$ 9,769.11	4239040 - Food & Beverages	45413	5/28/24 ESE Student Afterschool Snacks May'24
Carmel Drive Self-Storage	\$ 289.00	4350900 - Other Cont. Services	1322	5/5/24 Annual Storage Rental for ESE
Cloud City Youth	\$ 2,664.00	4340800 - Program Contractors	45407	4/25/24 ESE Program Contractor - Chess
Concorde, LLC	\$ 700.00	4340800 - Program Contractors	00051733a	4/1/24 Program Contractor - Traditional Arts
Concorde, LLC	\$ 350.00	4340800 - Program Contractors	00051733b	5/2/24 Program Contractor - Traditional Arts
Crisis Prevention Institute, Inc.	\$ 2,424.50	4357003 - Internal Instruction Fees	NAIN-076749	5/9/24 ESE & Summer Camp Training Materials
Cumulus Media	\$ 900.00	4346000 - Classified Advertising	BB4057867	4/28/24 Digital Staff Recruitment Spring Ads Apr'24
Cumulus Media	\$ 1,195.00	4346000 - Classified Advertising	BB4066780	4/30/24 Digital Staff Recruitment Ads Apr'24
Current Publishing	\$ 2,325.00	4345000 - Printing (Not Office Supplies)	75997	4/22/24 Park Conversations Mailing - Spring 2024
Dave & Buster's	\$ 2,024.00	4343007 - Field Trips	CK Request	5/6/24 STEAM Team Field Trip on 6/18/24
Discount School Supply	\$ 183.31	4239039 - General Program Supplies	W14627750101	5/8/24 STEAM Team Summer Camp Craft Supplies
Discount School Supply	\$ 441.05	4239039 - General Program Supplies	W14618940102	5/10/24 Adventures in Art Summer Camp Supplies
Discount School Supply	\$ 166.74	4239039 - General Program Supplies	W14618940101	5/11/24 Adventures in Art Summer Camp Supplies
Einstein Noah Restaurant Group Inc.	\$ 111.36	4239040 - Food & Beverages	4938616	4/24/24 ESE Full Time Staff Appreciation Breakfast 4/24/24
Einstein Noah Restaurant Group Inc.	\$ 146.06	4239039 - General Program Supplies	4991878	5/18/24 Science of Summer Camp Staff Training 5/18/24
Fazoli's Restaurant	\$ 279.80	4239039 - General Program Supplies	AAAZTL899QAT	5/17/24 Smoky Row ESE Parent's Night Out Dinner 5/17/24
Fun Express	\$ 558.98	4239039 - General Program Supplies	73093288901	4/30/24 West Clay ESE General Supplies
Fun Express	\$ 36.99	4239039 - General Program Supplies	73099723102	5/6/24 Camp Wayback Summer Camp Supplies Weeks 1-5
Fun Express	\$ 585.46	4239039 - General Program Supplies	73099723101	5/6/24 Camp Wayback Summer Camp Supplies Weeks 1-5
Fun Express	\$ 15.99	4239039 - General Program Supplies	73107304402	5/10/24 Cherry Tree ESE End of Year, "RICHER" Rewards, & Graduation Supplies
Fun Express	\$ 958.92	4239039 - General Program Supplies	73108439901	5/16/24 Smoky Row ESE Site Plan 4 Supplies
Fun Express	\$ 334.92	4239039 - General Program Supplies	73108635801	5/9/24 Science of Summer Camp Craft Kits

Carmel/Clay Board of Parks and Recreation
 Claim Sheet Fund 108 - Extended School Enrichment
 June 11, 2024

Name	Amount	Account	Num	Memo
Fun Express	\$ 569.16	4239039 - General Program Suppl	7310730401	5/9/24 Cherry Tree ESE End of School Year, "RICHER" Rewards, & Graduation Supplies
Fun with Frannie	\$ 240.00	4340800 - Program Contractors	042624	4/10/24 ESE Program Contractor - Airbrush
Grainger	\$ 4,645.63	4230200 - Office Supplies	9109238734	5/6/24 ESE Administrative Office Storage Shelves
Hobby Lobby	\$ 32.89	4239099 - Other Miscellaneous	130959901	4/19/24 Culture Committee Bins for ESE Afterschool Appreciation Week 2024
Holsten, Alyssa	\$ 89.44	4343000 - Travel Fees & Expenses	Reimb	5/23/24 Mileage Reimbursement 5/3/24-5/23/24
HP Inc.	\$ 3,254.85	4463200 - Computer Equipment	9018610745	5/14/24 Computer Equipment Replacement 2024 for ESE
IMAX Indianapolis	\$ 1,354.50	4343007 - Field Trips	CK Request	5/6/24 Enroute Field Trip on 6/7/24
Indy Sound Rentals	\$ 700.00	4340800 - Program Contractors	CK Request	5/6/24 Success on Stage Sound Equipment Rental for Play 1
InvigorateHR	\$ 433.33	4357004 - External Instructional Fees	1516	5/17/24 Employee Training Services & LMS E-Courses
InvigorateHR	\$ 162.00	4357004 - External Instructional Fees	1515	5/17/24 Employee Self Assessments - ESE Full Time New Hires
J E S & Sons 2-Way LLC	\$ 55.00	4350000 - Equipment Repairs & Maint.	92238	5/28/24 Smoky Row ESE Radio Repair
Konica Minolta Business Solutions	\$ 1,092.37	4353004 - Copier	293384770	4/27/24 Copier Charges ESE 1/28/24-4/27/24
Kroger	\$ 23.47	4239039 - General Program Supplies	100053	4/18/24 College Wood ESE Monthly Staff Training Lunch
Kroger	\$ 23.48	4239039 - General Program Supplies	100053	4/18/24 Clay Center ESE Monthly Staff Training Lunch
Kroger	\$ 456.88	4239039 - General Program Supplies	112628	4/12/24 ESE Site Plan 4 (2024) Common Club Supplies
Kroger	\$ 104.25	4239039 - General Program Supplies	124886	4/19/24 ESE Staff Appreciation Supplies
Kroger	\$ 207.87	4239099 - Other Miscellaneous	124886	4/19/24 ESE "Artist Alley" Event Refreshments
Kroger	\$ 82.95	4239099 - Other Miscellaneous	124886	4/19/24 Culture Committee ESE Afterschool Appreciation 2024
Kroger	\$ 36.34	4239039 - General Program Supplies	006225	4/22/24 Woodbrook ESE Training & Team Building Supplies
Kroger	\$ 111.61	4239039 - General Program Supplies	010743	4/22/24 Cherry Tree ESE Staff Training 4/22/24
Kroger	\$ 84.40	4239039 - General Program Supplies	010595	4/22/24 Clay Center ESE Staff Training & Team Building Supplies
Kroger	\$ 89.42	4239039 - General Program Supplies	093589	4/25/24 Woodbrook ESE Training & Team Building Supplies
Kroger	\$ 120.91	4239039 - General Program Supplies	065164	4/24/24 Prairie Trace ESE Staff Dinner 4/24/24
Lucero, Jennifer	\$ 46.97	4343000 - Travel Fees & Expenses	Reimb	5/29/24 Mileage Reimbursement 4/17/24-5/20/24
MacDesigns, Inc.	\$ 26,617.00	4356004 - Staff Clothing	23925	5/15/24 ESE Summer Camp Series Staff Shirts 2024
MacDesigns, Inc.	\$ 420.00	4356005 - Participant Clothing	23926	5/15/24 ESE Additional "IMPACT" Shirts for 2024
Magers Bookkeeping Services LLC	\$ 450.00	4341999 - Other Professional Fees	1170	5/28/24 2024 Bookkeeping Services
MainGate Inc	\$ 290.00	4343007 - Field Trips	CK Request	5/6/24 In The Zone Field Trip on 6/21/24
McAlister's Deli	\$ 1,173.39	4239099 - Other Miscellaneous	2311336	5/14/24 ESE Summer Camp 2024 All Staff Training Dinner 5/14/24
McAlister's Deli	\$ 1,082.07	4239099 - Other Miscellaneous	2311455	5/16/24 ESE Summer Camp All Staff Training 5/16/24
McAlister's Deli	\$ 134.97	4239039 - General Program Supplies	2310987	5/22/24 West Clay ESE Staff Training Dinner 5/22/24
McAlister's Deli	\$ 65.39	4239039 - General Program Supplies	2310976	5/21/24 Success on Stage Summer Camp Staff Training Dinner 5/21/24
Mellow Mushroom Pizza Bakers	\$ 56.96	4239039 - General Program Supplies	14222	5/17/24 Carmel Elementary ESE JR. Counselor Leadership Celebration Meeting 5/17/24
Mellow Mushroom Pizza Bakers	\$ 90.43	4239039 - General Program Supplies	14237	5/18/24 Under the Sun Camp Staff Training Luncheon 5/18/24
Mellow Mushroom Pizza Bakers	\$ 140.90	4239039 - General Program Supplies	14207	5/24/24 EnRoute Summer Camp Staff Training Lunch 5/24/24
Moe's Southwest Grill	\$ 845.00	4239099 - Other Miscellaneous	1886017	5/2/24 ESE Thank-A-Youth Worker Day Dinner 5/2/24
Moe's Southwest Grill	\$ 742.50	4239099 - Other Miscellaneous	1921187	5/20/24 ESE Summer Camp Leadership Training Dinner 5/20/24
Moe's Southwest Grill	\$ 305.00	4239039 - General Program Supplies	1916118	5/18/24 STEAM Team Summer Camp Training Luncheon 5/18/24
Mountain Glacier, LLC	\$ 25.97	4350900 - Other Cont. Services	0900577754	5/13/24 Drinking Water ESE
Nasco	\$ 331.18	4239039 - General Program Supplies	595473	5/15/24 Adventures in Art Camp Supplies
NCSI - National Center Safety Initiatives	\$ 1,720.50	4341990 - Criminal Background Checks	44799	5/1/24 New Hire & Annual Background Checks
Occupational Health Centers of Southwest	\$ 200.00	4340700 - Medical Fees (Drug Tests)	1015529543	4/30/24 New Hire Drug Screen ESE Staff
Ray Marketing powered by Proforma	\$ 1,925.00	4230100 - Stationary & Printing Materials	BR71004139A	5/11/24 ESE Form "RICHER RIGHT UP" Restock
Ray Marketing powered by Proforma	\$ 27.65	4356004 - Staff Clothing	BR71004135A	5/11/24 ESE New Hire Uniform for Full Time Staff
Rocky Mountain Sunscreen	\$ 2,661.12	4239099 - Other Miscellaneous	17340	4/30/24 ESE Summer Camp Program 2024 Bulk Sunscreen
S & S Worldwide	\$ 1,567.61	4239039 - General Program Supplies	IN101381410	4/25/24 Smoky Row ESE Site Plan 4 2024 Supplies
S & S Worldwide	\$ 5.63	4239039 - General Program Supplies	IN101388684	5/7/24 Camp Wayback Summer Camp Supplies Week 1-5
S & S Worldwide	\$ 326.89	4239039 - General Program Supplies	IN101387684	5/6/24 Camp Wayback Summer Camp Supplies Week 1-5
S & S Worldwide	\$ 175.41	4239039 - General Program Supplies	IN101390569	5/9/24 Forest Dale ESE Craft Supplies
S & S Worldwide	\$ 210.46	4239039 - General Program Supplies	IN101389103	5/7/24 STEAM Team Summer Camp Craft Supplies
S & S Worldwide	\$ 405.46	4239039 - General Program Supplies	IN101387397	5/3/24 Clay Center ESE Program Supplies
S & S Worldwide	\$ 332.47	4239039 - General Program Supplies	IN101387567	5/6/24 Summer Experience Camp Supplies
S & S Worldwide	\$ 1,051.47	4239039 - General Program Supplies	IN101389942	5/9/24 Woodbrook ESE Program Craft Supplies & Playground Equipment
S & S Worldwide	\$ 164.52	4239039 - General Program Supplies	IN101390718	5/10/24 Summer Experience Camp Supplies
S & S Worldwide	\$ 18.38	4239039 - General Program Supplies	IN101393833	5/15/24 Summer Experience Camp Supplies
S & S Worldwide	\$ 169.17	4239039 - General Program Supplies	IN101393793	5/15/24 Science of Summer Camp Supplies
S & S Worldwide	\$ 267.90	4239039 - General Program Supplies	IN101390358	5/9/24 Prairie Trace ESE Program Supplies
S & S Worldwide	\$ 277.53	4239039 - General Program Supplies	IN101390715	5/10/24 Under the Sun Camp Supplies

Carmel/Clay Board of Parks and Recreation
 Claim Sheet Fund 108 - Extended School Enrichment
 June 11, 2024

Name	Amount	Account	Num	Memo
Schuster, Victoria	\$ 162.74	4343000 - Travel Fees & Expenses	Reimb	5/29/24 Mileage Reimbursement 1/11/24-5/20/24
Schuster, Victoria	\$ 20.00	4343000 - Travel Fees & Expenses	Reimb	5/29/24 Parking Fees for ESE Event
Sky Zone Indoor Trampoline Park	\$ 1,924.93	4343007 - Field Trips	CK Request	5/6/24 EnRoute Field Trip 6/14/24
Staples	\$ 99.77	4230200 - Office Supplies	6002178671	5/6/24 ESE Administrative Office Supplies
Staples	\$ 21.86	4230200 - Office Supplies	6002178669	5/6/24 ESE Administrative - Office Supplies
Staples	\$ 188.09	4239039 - General Program Supplies	6002324913	5/13/24 Camp Wayback Summer Camp Supplies Weeks 1-5
Staples	\$ 83.98	4239039 - General Program Supplies	6001782275	4/29/24 Carmel Elementary ESE Club Supplies
Staples	\$ 69.20	4230200 - Office Supplies	6002324914	5/13/24 ESE Administrative - Office Supplies
Staples	\$ 239.32	4239039 - General Program Supplies	6002324918	5/13/24 Miscellaneous Office & Program Supplies STEAM Team Summer Camp
Staples	\$ 86.81	4230200 - Office Supplies	6001117209	4/8/24 Carmel Elementary ESE Office Supplies
Staples	\$ 209.63	4230200 - Office Supplies	6001117206	4/8/24 Woodbrook ESE - Office Supplies
Staples	\$ 199.22	4239039 - General Program Supplies	6001117204	4/8/24 Cherry Tree ESE Site Plan 4 (2024) Supplies
Staples	\$ 13.04	4239039 - General Program Supplies	6001117203	4/8/24 Cherry Tree ESE Site Plan 4 (2024) Supplies
Staples	\$ 41.99	4239039 - General Program Supplies	6001117202	4/8/24 ESE School's Out Camp East (Spring Break 2024) Activity Supplies
Staples	\$ 61.24	4230200 - Office Supplies	6001117205	4/8/24 Prairie Trace ESE Office Supplies
Staples	\$ 210.53	4230200 - Office Supplies	6002324917	5/13/24 Woodbrook ESE Office Supplies
Staples	\$ 506.28	4239039 - General Program Supplies	6002324916	5/13/24 Adventures in Art Summer Camp Supplies
Staples	\$ 145.76	4239099 - Other Miscellaneous	6002324915	5/13/24 ESE Main Office - Staff Work Station Supplies
Staples	\$ 89.02	4230200 - Office Supplies	6002581717	5/20/24 Woodbrook ESE Office Supplies
Staples	\$ 110.28	4239039 - General Program Supplies	6002178670	5/6/24 Camp Wayback Summer Camp Supplies
Terryberry	\$ 67.04	4350900 - Other Cont. Services	Q45427	5/14/24 Employee Recognition Gift
Terryberry	\$ 40.26	4350900 - Other Cont. Services	Q46255	5/15/24 Employee Recognition Gift
Tie Dye Lab	\$ 1,280.00	4343007 - Field Trips	CK Request	5/6/24 Adventures in Art Field Trip 5/31/24
UKG Inc.	\$ 16,043.06	4350900 - Other Cont. Services	PRINVD452358	3/7/24 Payroll System Quarterly Subscription Fees
Verizon Wireless	\$ 499.46	4344100 - Cellular Phone Fees	9962470527	4/23/24 Cell Phone Charges ESE
Verizon Wireless	\$ 1,435.85	4344100 - Cellular Phone Fees	9962741907	4/27/24 iPad Usage ESE
Walmart	\$ 14.74	4239039 - General Program Supplies	554116503720262	4/25/24 Clay Center ESE Additional "Thank A Youth Worker 2024"
Walmart	\$ 244.02	4239039 - General Program Supplies	714117545816048	4/26/24 Mohawk Trails ESE Staff Training & Training Building Supplies
Walmart	\$ 223.85	4239099 - Other Miscellaneous	574117627427605	4/26/24 ESE "Thank A Youth Worker" 2024 Supplies
Walmart	\$ 124.85	4239039 - General Program Supplies	574117545897633	4/26/24 Kids at Play/In The Zone Summer Camp Program Supplies
Walmart	\$ 25.94	4239039 - General Program Supplies	714117518166351	4/26/24 West Clay ESE Training Supplies
Walmart	\$ 182.38	4239039 - General Program Supplies	844117510246221	4/26/24 West Clay ESE Training Supplies
Walmart	\$ 37.32	4239039 - General Program Supplies	534117508561091	4/26/24 West Clay ESE Parent's Night Out 4/26/24
Walmart	\$ 27.36	4239039 - General Program Supplies	714116774656366	4/25/24 Towne Meadow ESE Staff Training Supplies
Walmart	\$ 191.26	4239039 - General Program Supplies	554116552680448	4/25/24 Towne Meadow ESE Staff Training Supplies
Walmart	\$ 257.27	4239039 - General Program Supplies	774117603100730	4/26/24 Towne Meadow ESE Staff Training Supplies
Walmart	\$ 247.28	4239039 - General Program Supplies	054116547882857	4/25/24 Towne Meadow ESE Parent's Night Out Supplies 4/26/24
Walmart	\$ 34.44	4239039 - General Program Supplies	074129604667255	5/8/24 Carmel Elementary ESE JR. Counselor Meeting Supplies
Walmart	\$ 104.57	4239039 - General Program Supplies	074131513937213	5/10/24 EnRoute Summer Camp Program Supplies 2024
Walmart	\$ 44.52	4239039 - General Program Supplies	64137631187245	5/16/24 EnRoute Summer Camp Program Supplies 2024
Walmart	\$ 22.93	4239039 - General Program Supplies	324144590681726	5/23/24 EnRoute Summer Camp Program Supplies 2024
Walmart	\$ 184.01	4239039 - General Program Supplies	614142586685726	5/21/24 EnRoute Summer Camp Program Supplies 2024
Walmart	\$ 319.98	4239039 - General Program Supplies	324145722921768	5/24/24 EnRoute Summer Camp Program Supplies 2024
Walmart	\$ 283.04	4239039 - General Program Supplies	074144523367160	5/23/24 EnRoute Summer Camp Program Supplies 2024
Walmart	\$ 121.90	4239099 - Other Miscellaneous	064134704687311	5/13/24 ESE Summer Camp Training Supplies
Walmart	\$ 48.13	4239099 - Other Miscellaneous	074141478137304	5/20/24 ESE Summer Camp Training Supplies
Walmart	\$ 27.48	4239039 - General Program Supplies	064144596327103	5/23/24 Towne Meadow ESE Program Supplies May'24
Walmart	\$ 248.00	4239039 - General Program Supplies	064144517637017	5/23/24 Towne Meadow ESE Program Supplies May'24
Walmart	\$ 20.00	4239039 - General Program Supplies	134144589930825	5/23/24 Towne Meadow ESE Program Supplies May'24
Walmart	\$ 136.82	4239039 - General Program Supplies	044137541571227	5/16/24 West Clay ESE General Supplies
Walmart	\$ 24.97	4239039 - General Program Supplies	064137515177490	5/16/24 West Clay ESE General Supplies
Walmart	\$ 569.68	4239039 - General Program Supplies	074137568327484	5/16/24 Forest Dale ESE Spring Store Supplies
Walmart	\$ 543.00	4239039 - General Program Supplies	064136580637333	5/15/24 STEAM Team Summer Camp Program Supplies
Walmart	\$ 747.04	4239039 - General Program Supplies	164136587850443	5/15/24 STEAM Team Summer Camp Program Supplies
Walmart	\$ 454.82	4239039 - General Program Supplies	064136591317154	5/15/24 STEAM Team Summer Camp Program Supplies
Walmart	\$ 111.65	4239039 - General Program Supplies	164141607690205	5/20/24 Carmel Elementary ESE End of School Year 2024 Supplies
Walmart	\$ 29.00	4239039 - General Program Supplies	534142568833781	5/21/24 Carmel Elementary ESE End of School Year 2024 Supplies
Walmart	\$ 59.88	4239039 - General Program Supplies	044135569301408	5/14/24 Forest Dale ESE Supplies

Carmel/Clay Board of Parks and Recreation
 Claim Sheet Fund 108 - Extended School Enrichment
 June 11, 2024

Name	Amount	Account	Num	Memo
Walmart	\$ 184.45	4239039 - General Program Supplies	074137592437179	5/16/24 College Wood ESE Program Supplies
Walmart	\$ 155.41	4239039 - General Program Supplies	044137540241104	5/16/24 Success on Stage Summer Camp Supplies
Walmart	\$ 221.37	4239039 - General Program Supplies	044141601631424	5/20/24 Cherry Tree ESE End of School Year 2024 Supplies
Walmart	\$ 247.67	4239039 - General Program Supplies	164141598710198	5/20/24 Adventures in Art Summer Camp General Supplies
Walmart	\$ 175.69	4239039 - General Program Supplies	164141587860382	5/20/24 Clay Center ESE Program Supplies
Walmart	\$ 333.10	4239039 - General Program Supplies	044141583771160	5/20/24 Outdoor Explorers Camp Supplies
Walmart	\$ 143.75	4239039 - General Program Supplies	324143577421833	5/22/24 College Wood ESE Ice Cream Party Supplies
Walmart	\$ 32.17	4239039 - General Program Supplies	134144522760816	5/23/24 Chillville Summer Camp Cooking Supplies
Walmart	\$ 333.99	4239039 - General Program Supplies	064144525767237	5/23/24 Chillville Summer Camp Cooking Supplies
Walmart	\$ 439.54	4239039 - General Program Supplies	614144550595901	5Chillville Summer Camp Cooking Supplies 5/23/24
Werich, Allison	\$ 129.31	4343000 - Travel Fees & Expenses	Reimb	5/29/24 Mileage Reimbursement 3/26/24-5/28/24
Willow Marketing Management, Inc.	\$ 75.00	4341955 - Info Sys Maint/Contracts	24425	4/30/24 Website Hosting Apr'24
Yang, Linlin	\$ 226.50	4358400 - Refunds, Awards & Indemnities	CK Request	5/30/24 Parent Refund Request
May 7 - Jun 3, 24	<u>\$ 155,383.25</u>			

Carmel/Clay Board of Parks and Recreation
Claim Sheet Fund 109 - Monon Community Center
June 11, 2024

Name	Amount	Account	Num	Memo
May 7 - Jun 3, 24				
Absorb Software Inc.	\$ 8,982.00	4341955 - Info Sys Maint/Contracts	INV00117151	4/29/24 Learning Management Software Licensing 2024-25
Ace - Pak Products Inc.	\$ 627.31	4238900 - Cleaning & Maint. Supplies	A-12437	4/25/24 Monon Community Center Janitorial Supplies
Ace - Pak Products Inc.	\$ 1,251.44	4238900 - Cleaning & Maint. Supplies	A-12496	5/10/24 Monon Community Center Janitorial Supplies
Ace - Pak Products Inc.	\$ 300.71	4239039 - General Program Supplies	A-12260	5/5/24 Cleaning & Safety Supplies for Monon Community Center Internal Programs
Active Network, LLC	\$ 2,907.00	4239039 - General Program Supplies	11141472	5/16/24 Waterpark Credit Card Readers 2024
Amazon	\$ 1,820.59	4239012 - Safety Supplies	1GJG-736P-HXN1	5/15/24 Aquatics Safety Equipment
Amazon	\$ 81.18	4239099 - Other Miscellaneous	1HTG-VJPT-KGJX	5/15/24 Waterpark First Aid Supplies
Amazon	\$ 940.65	4239045 - Retail Goods	1WRJ-KQX7-L9NQ	5/15/24 Waterpark Retail Sales Inventory & Decorations for My Monon Rewards
Amazon	\$ 189.50	4238000 - Small Tools & Minor Equipment	1HCC-D4YP-KTT4	5/15/24 Small Tool for Monon Community Center Maintenance
Amazon	\$ 328.47	4239039 - General Program Supplies	1RWC-TG19-KJ3D	5/15/24 Adaptive Program - 5K Run Supplies for 5/18/24
Amazon	\$ 331.40	4239039 - General Program Supplies	1CSG-9RFD-JQM1	5/15/24 Pickleball Program Supplies
Amazon	\$ 192.84	4346000 - Classified Advertising	1KDL-PT11-MWTK	5/15/24 Seasonal & Part Time Summer Staff Supplies for Mix & Mingle 5/24/24
Amazon	\$ 514.90	4346000 - Classified Advertising	13HN-GX6N-LP17	5/15/24 Seasonal & Part Time Summer Staff Supplies for Mix & Mingle Event 5/24/24
American Red Cross	\$ 644.00	4358300 - Other Fees & Licenses	22684355	4/30/24 Lifeguard Class 4/29/24
American Red Cross	\$ 342.00	4358300 - Other Fees & Licenses	22689184	5/15/24 Adult & Pediatric First Aid/CPR/AED Training
American Red Cross	\$ 552.00	4358300 - Other Fees & Licenses	22689184	5/15/24 Lifeguard Class 5/4/24
American Red Cross	\$ 266.00	4358300 - Other Fees & Licenses	22689184	5/15/24 Adult & Pediatric First Aid/CPR/AED Training
American Red Cross	\$ 368.00	4358300 - Other Fees & Licenses	22689184	5/15/24 Lifeguard Recertification Class 5/12/24
Belmont Graphics LLC	\$ 367.00	4345000 - Printing (Not Office Supplies)	71421	5/19/24 Waterpark Sign Updates 2024
Bessler, Anne Marie	\$ 20.10	4343000 - Travel Fees & Expenses	Reimb	5/30/24 Mileage Reimbursement 4/5/24-5/30/24
Brainstorm Print	\$ 895.00	4350000 - Equipment Repairs & Maint.	144899	5/22/24 Concessions Menu Signage 2024
Brainstorm Print	\$ 60.00	4346000 - Classified Advertising	144881	5/22/24 Hiring Promotion Banners
Buddenbaum & Moore LLC	\$ 10,300.00	4350100 - Building Repairs & Maint.	9603	5/16/24 Service - Waterpark Kiddie Pool Repair
Buddenbaum & Moore LLC	\$ 668.40	4238900 - Cleaning & Maint. Supplies	9541	5/15/24 Pool Reagent's for Waterpark
Buddenbaum & Moore LLC	\$ 1,940.80	4238900 - Cleaning & Maint. Supplies	9573	5/15/24 Waterpark Startup Chemicals 2024
Buddenbaum & Moore LLC	\$ 16,411.20	4238900 - Cleaning & Maint. Supplies	9575	5/15/24 Waterpark 2024 Startup Chemicals
Buddenbaum & Moore LLC	\$ 19,350.00	4350100 - Building Repairs & Maint.	9399	3/20/24 Drain Covers in Lazy River, Deep Pool & Drop Pool
Carmel Drive Self-Storage	\$ 281.00	4350900 - Other Cont. Services	1322	5/5/24 Annual Storage Rental - MCC
Carmel Drive Self-Storage	\$ 272.00	4350900 - Other Cont. Services	1322	5/5/24 Annual Climate Controlled Storage Rental Unit - MCC
Carmel Utilities	\$ 4,707.43	4348500 - Water & Sewer	7316000000 Apr'24	5/13/24 Monon Community Center
CenterPoint Energy	\$ 1,411.02	4349000 - Gas	57844597 Apr'24	5/6/24 Monon Community Center
CenterPoint Energy	\$ 18.27	4349000 - Gas	57904133 Apr'24	5/14/24 Monon Community Center Aquatics Entry
CenterPoint Energy	\$ 326.00	4349000 - Gas	57844902 Apr'24	5/14/24 Monon Community Center Aquatic Filter Building
Cintas Corporation	\$ 489.93	4238900 - Cleaning & Maint. Supplies	4198959972	4/29/24 Monon Community Center Cleaning Supplies
Cintas Corporation	\$ 489.93	4238900 - Cleaning & Maint. Supplies	4190253879	4/22/24 Monon Community Center Cleaning Supplies
Cintas Corporation	\$ 511.93	4238900 - Cleaning & Maint. Supplies	4191682060	5/6/24 Monon Community Center Cleaning Supplies
Cintas Corporation	\$ 489.93	4238900 - Cleaning & Maint. Supplies	4192420413	5/13/24 Monon Community Center Cleaning Supplies
Constellation NewEnergy	\$ 2,337.54	4349000 - Gas	4045900	5/29/24 Monon Community Center
Constellation NewEnergy	\$ 15.15	4349000 - Gas	4045900	5/29/24 Monon Community Center Aquatic Entry
Corvus Janitorial Systems	\$ 10,494.00	4350600 - Cleaning Services	406191002-104	6/1/24 2024 Janitorial Services - Monon Community Center
Corvus Janitorial Systems	\$ 14,253.00	4350600 - Cleaning Services	406191001-105	6/1/24 2024 Janitorial Services - Monon Community Center Day Service
Crossroads Rehabilitation Center, Inc.	\$ 200.00	4239039 - General Program Supplies	INV11151	5/1/24 Sign Interpreter for Barrier Free Show 3/16/24
Cumulus	\$ 2,912.66	4341991 - Marketing & Promotions	8B4066778	4/30/24 Digital Advertising for Monon Community Center Membership Apr'24
Cumulus	\$ 1,195.00	4346000 - Classified Advertising	8B4066780	4/30/24 Digital Staff Recruitment Ads Apr'24
Cumulus	\$ 900.00	4346000 - Classified Advertising	8B4057857	4/28/24 Digital Staff Recruitment Spring Ads Apr'24
Current Publishing	\$ 2,325.00	4345000 - Printing (Not Office Supplies)	75997	4/22/24 Park Conversations Mailing - Spring 2024
Delfin, Freddy	\$ 25.00	4344100 - Cellular Phone Fees	Reimb	5/9/24 Cell Phone Fees Apr'24
Destination Travel Network	\$ 700.00	4341991 - Marketing & Promotions	INV00151640	5/27/24 Waterpark Advertising 2024
Direct Fitness Solutions, LLC	\$ 778.00	4350000 - Equipment Repairs & Maint.	0588625-IN	5/7/24 Fitness Equipment Preventative Maintenance May'24
DirectTV	\$ 244.99	4349900 - Cable Service	038573536X240505	5/5/24 Dish Service - Monon Community Center
Displays2go	\$ 832.96	4230200 - Office Supplies	PSI2342359	5/10/24 Waterbase Signs for Recreation & Facilities
Duke Energy	\$ 22,924.87	4348000 - Electricity	910123195102 Apr'24	4/30/24 Monon Community Center West
Duke Energy	\$ 2,048.70	4348000 - Electricity	910123160391 Apr'24	4/30/24 Monon Community Center East
Ellis Mechanical & Electrical	\$ 1,234.11	4350100 - Building Repairs & Maint.	240289	3/4/24 Service - Monon Community Center AHU-1
Ellis Mechanical & Electrical	\$ 892.36	4350000 - Equipment Repairs & Maint.	240204	3/4/24 Service - IT Room Air at Monon Community Center East Building
Ellis Mechanical & Electrical	\$ 813.98	4350000 - Equipment Repairs & Maint.	240275	3/4/24 Emergency Service Call - Indoor Lap Pool Heater
Ellis Mechanical & Electrical	\$ 1,226.08	4350100 - Building Repairs & Maint.	240499	4/30/24 Service - Monon Community Center AHU-1 Supply Fan

Carmel/Clay Board of Parks and Recreation
Claim Sheet Fund 109 - Monon Community Center
June 11, 2024

Name	Amount	Account	Num	Memo
Ellis Mechanical & Electrical	\$ 3,790.07	4350100 - Building Repairs & Maint.	231710	4/29/24 Service Call - Indoor Pump Room Plumbing
Ellis Mechanical & Electrical	\$ 4,250.00	4350100 - Building Repairs & Maint.	24045	3/1/24 Service - Indoor Pool Makeup Line Backflow Replacement
Ellis Mechanical & Electrical	\$ 414.00	4350100 - Building Repairs & Maint.	240539	5/22/24 Service - Waterpark Cabana Water Supply
Ellis Mechanical & Electrical	\$ 544.90	4350100 - Building Repairs & Maint.	240666	5/22/24 Service - Waterpark Lap Activity Pool Boiler
Ellis Mechanical & Electrical	\$ 10,800.00	4350100 - Building Repairs & Maint.	24105	5/22/24 Service - Replace Grease Interceptor - Waterpark Concessions
Environmental Laboratories, Inc.	\$ 66.00	4350900 - Other Cont. Services	20397180	5/2/24 Weekly Water Testing - MCC Indoor
Environmental Laboratories, Inc.	\$ 99.00	4350900 - Other Cont. Services	20397656	5/10/24 Weekly Water Testing - MCC Outdoor
Environmental Laboratories, Inc.	\$ 165.00	4350900 - Other Cont. Services	20398203	5/16/24 Weekly Water Testing - MCC Indoor/Outdoor Pools
Environmental Laboratories, Inc.	\$ 132.00	4350900 - Other Cont. Services	20398290	5/20/24 Weekly Water Testing - MCC
Environmental Laboratories, Inc.	\$ 200.00	4350900 - Other Cont. Services	20398290	5/20/24 Waterpark Water Testing Weekend Lab Fees
Environmental Laboratories, Inc.	\$ 198.00	4350900 - Other Cont. Services	20398635	5/23/24 Weekly Water Testing - MCC Indoor/Outdoor
Fed Ex	\$ 5.47	4237000 - Repair Parts	8-494-24849	5/8/24 Monon Community Center Maintenance Shipping Service
Fuller Engineering Company, LLC	\$ 6,050.00	4350100 - Building Repairs & Maint.	24-2137	5/8/24 Replacement VFD for Body Slide Pump
Fun Express	\$ 41.94	4239039 - General Program Supplies	3106845301	5/8/24 Waterpark Monon Mixer 6/7/24 Supplies
Gold Medal Products	\$ 372.65	4239040 - Food & Beverages	183296	5/10/24 Waterpark Concessions Plastic Product 5/17/24
Grainger	\$ 339.47	4237000 - Repair Parts	9103815933	4/30/24 Waterpark Inground Hydrant Repair Parts & Miscellaneous Supplies
Grainger	\$ 254.47	4238900 - Cleaning & Maint. Supplies	9111011616	5/7/24 Waterpark Women's Restroom Hygiene Equipment
Graybar	\$ 281.28	4237000 - Repair Parts	9336890546	4/18/24 Replacement LED Lights for Monon Community Center
Green Touch Services, Inc.	\$ 701.25	4350400 - Grounds Maintenance	146110	4/30/24 Landscape Maintenance Central Waterpark
HP Inc.	\$ 5,688.75	4463200 - Computer Equipment	9018588883	5/8/24 Computer Equipment Replacement 2024
HP Inc.	\$ 773.00	4463200 - Computer Equipment	9018568142	5/2/24 Computer Equipment Replacement 2024
HP Inc.	\$ 5,474.70	4463200 - Computer Equipment	9018571787	5/3/24 Computer Equipment Replacement 2024
HP Inc.	\$ 4,806.90	4463200 - Computer Equipment	9018598443	5/10/24 Computer Equipment Replacement 2024 for MCC
Hydrotech Systems LTD	\$ 494.33	4350000 - Equipment Repairs & Maint.	AASF135	5/15/24 Flow Rider Repair Parts 2024
InvigorateHR	\$ 433.33	4357004 - External Instructional Fees	1616	5/17/24 Employee Training Services & LMS E-Courses
Konica Minolta Business Solutions	\$ 837.03	4353004 - Copier	299359840	4/26/24 Copier Charges MCC East 1/27/24-4/26/24
Konica Minolta Business Solutions	\$ 371.68	4353004 - Copier	9009937041	5/17/24 Copier Charges MCC West 2/18/24-5/17/24
Kroger	\$ 46.25	4239039 - General Program Supplies	125038	4/19/24 Adaptive Program Supplies - Movie Night Social 4/19/24
Kroger	\$ 39.95	4239039 - General Program Supplies	018406	4/22/24 Aquatics Program "Sea Dragons End of the Year Party" Supplies 4/24/24
Kully Supply	\$ 765.64	4237000 - Repair Parts	643374	4/30/24 Waterpark Drinking Fountains & Toilets Replacement Parts
Lampe, John	\$ 149.25	4343000 - Travel Fees & Expenses	Reimb	5/15/24 Travel Fees & Expenses for IU Conference Apr'24
Lee Supply Corp	\$ 76.07	4238900 - Cleaning & Maint. Supplies	S101570872.001	5/7/24 Monon Community Center Replacement Toilet Repair Parts
Lee Supply Corp	\$ 210.21	4237000 - Repair Parts	S101574741.001	5/9/24 Monon Community Center Toilet Repair Parts
Lee Supply Corp	\$ 402.00	4237000 - Repair Parts	S101575836.001	5/9/24 Replacement Shower Cartridge
Lifeguard Store, Inc., The	\$ 637.38	4239012 - Safety Supplies	INV001403094	4/29/24 Lifeguard Supplies Preseason 2024
Lifeguard Store, Inc., The	\$ 888.04	4239039 - General Program Supplies	INV001409278	5/10/24 Aquatics Fitness Equipment
Lifeguard Store, Inc., The	\$ 270.00	4239012 - Safety Supplies	INV001416895	5/23/24 Waterpark Staff Safety Supplies
Lifeguard Store, Inc., The	\$ 974.86	4239012 - Safety Supplies	INV001417076	5/23/24 Aquatics Safety Supplies
Magers Bookkeeping Services LLC	\$ 435.00	4341999 - Other Professional Fees	1170	5/28/24 2024 Bookkeeping Services
McAlister's Deli	\$ 170.04	4239099 - Other Miscellaneous	2294146	5/11/24 Aquatics Pool Manager & MSA Lead Staff Training Lunch 5/11/24
McAlister's Deli	\$ 167.84	4239099 - Other Miscellaneous	2294146	5/11/24 Aquatics Pool Manager & MSA Lead Staff Training Lunch 5/11/24
Menards	\$ 20.49	4237000 - Repair Parts	308311724065847	4/26/24 Waterpark Hardware & Supplies
Menards	\$ 173.27	4237000 - Repair Parts	308313224021330	5/11/24 Maintenance Supplies for Monon Community Center
Millikan, Tim	\$ 50.00	4344100 - Cellular Phone Fees	Reimb	5/17/24 Cell Phone Fees Mar'24 & Apr'24
Moe's Southwest Grill	\$ 450.00	4239039 - General Program Supplies	1888815	5/7/24 Member Services Staff Training Dinner 5/7/24
Mountain Glacier, LLC	\$ 54.94	4350900 - Other Cont. Services	0900577752	5/13/24 Drinking Water MCC West
Mountain Glacier, LLC	\$ 54.94	4350900 - Other Cont. Services	0900577752	5/13/24 Drinking Water MCC West
Mountain Glacier, LLC	\$ 87.39	4350900 - Other Cont. Services	0900577753	5/13/24 Drinking Water MCC East
Napa	\$ 43.62	4238900 - Cleaning & Maint. Supplies	4329-217202	5/11/24 Monon Community Center Pressure Washer Maintenance Supplies
NCSI - National Center Safety Initiatives	\$ 814.00	4341990 - Criminal Background Checks	44799	5/1/24 New Hire & Annual Background Checks
Nexstar (Fox59)	\$ 960.00	4341991 - Marketing & Promotions	4419514-1	4/30/24 Monon Community Center Membership Campaign Apr'24
Normand, Mike	\$ 100.00	4344100 - Cellular Phone Fees	Reimb	5/21/24 Cell Phone Fees Apr'24 & May'24
Northern Safety Co., Inc.	\$ 595.75	4239012 - Safety Supplies	906165426	4/24/24 Waterpark 2024 First Aid Supplies
Northern Tool & Equipment	\$ 1,340.98	4238000 - Small Tools & Minor Equipment	53543677	4/24/24 Monon Community Center Pressure Washer & Replacement Parts
Northern Tool & Equipment	\$ 242.98	4238000 - Small Tools & Minor Equipment	53547670	4/25/24 Replacement High Pressure Hoses for Monon Community Center
Payne Sparkman Manufacturing, Inc.	\$ 345.00	4350100 - Building Repairs & Maint.	27712	5/7/24 Gym Lights Controller
Pepsi Cola Gen. Bot.	\$ 1,838.08	4239040 - Food & Beverages	20805752	5/8/24 Concessions Beverage Order (Start Up 2024) 5/8/24
Pyramide USA Inc.	\$ 645.00	4237000 - Repair Parts	13844	5/3/24 Aquatics Waterpark Feature Replacement Hardware

Carmel/Clay Board of Parks and Recreation
 Claim Sheet Fund 109 - Monon Community Center
 June 11, 2024

Name	Amount	Account	Num	Memo
Ray Marketing powered by Proforma	\$ 870.00	4239039 - General Program Supplies	BR71004120A	4/21/24 Monon Community Center Membership Wrist Coils
Ray Marketing powered by Proforma	\$ 558.60	4356004 - Staff Clothing	BR71004136A	5/11/24 Summer Pool Managers Uniforms 2024
Ray Marketing powered by Proforma	\$ 27.00	4356004 - Staff Clothing	BR71004137A	5/19/24 Staff Uniform Embroidery - 1st QTR 2024
Republic Services	\$ 1,357.71	4350101 - Trash Collection	0761-006441943	5/25/24 Trash & Recycling Services - Monon Community Center
Ritchie, Ingrid M, PhD	\$ 7,721.00	4340800 - Program Contractors	1127	2/29/24 Contracted Program - Tai Chi
Scat Pest Control	\$ 650.00	4350100 - Building Repairs & Maint.	351930	5/8/24 Monon Community Center - 2024 Pest Control Services
SenSource	\$ 80.00	4463200 - Computer Equipment	59727	5/6/24 Occupancy Monitoring Space for Waterpark 2024
Staples	\$ 148.19	4239039 - Other Miscellaneous	6001117208	4/8/24 MCC Office Supplies
Staples	\$ 32.60	4239039 - General Program Supplies	6001117208	4/8/24 MCC Member Services Kitchen Supplies
Staples	\$ 19.79	4239039 - General Program Supplies	6001117207	4/8/24 MCC Member Services Kitchen Supplies
Stericycle, Inc.	\$ 43.89	4350900 - Other Cont. Services	8006980890	4/26/24 Medical Waste Removal
SubItUp Inc	\$ 13,200.00	4355200 - Subscriptions	8337	7/1/24 MCC Employee Scheduling Software Subscription 7/1/24-6/30/25
Sunbelt Rentals, Inc.	\$ 1,799.16	4350000 - Equipment Repairs & Maint.	152586473-002	4/11/24 Gantry Rental for Flow Rider Startup 2024
Sunbelt Rentals, Inc.	\$ 1,758.30	4350000 - Equipment Repairs & Maint.	153735580-0001	5/14/24 Lift Rental for Waterpark
Sysco	\$ 2,790.69	4239040 - Food & Beverages	338993687	5/10/24 Waterpark Concessions Order 5/10/24
Sysco	\$ 3,642.22	4239040 - Food & Beverages	438002102	5/17/24 Waterpark Concessions Ordre 5/17/24
Sysco	\$ (244.31)	4239040 - Food & Beverages	438004905	5/18/24 Waterpark Concessions Order 5/17/24
Sysco	\$ 1,450.27	4239040 - Food & Beverages	438006814	5/21/24 Waterpark Concessions Food Order 5/21/24
Sysco	\$ 61.62	4238000 - Small Tools & Minor Equipment	438017460	5/31/24 Small Equipment for Concessions
Sysco	\$ 418.30	4238000 - Small Tools & Minor Equipment	438017501	5/31/24 Waterpark Concessions Equipment
Sysco	\$ 3,281.37	4239040 - Food & Beverages	438010377	5/24/24 Waterpark Concessions Food Order 5/24/24
Sysco	\$ 1,043.35	4239040 - Food & Beverages	438014632	5/28/24 Waterpark Concessions Food Order 5/28/24
Terryberry	\$ 76.32	4350900 - Other Cont. Services	Q47574	5/20/24 Employee Recognition Gift
Terryberry	\$ 71.68	4350900 - Other Cont. Services	Q48940	5/22/24 Employee Recognition Gift
Trench Drain Systems	\$ 1,130.36	4237000 - Repair Parts	231910A-2	4/26/24 Waterpark Replacement Drain Grates
TriCo Regional Sewer Utility	\$ 756.82	4348500 - Water & Sewer	1001164 Apr'24	5/1/24 Monon Community Center
TriCo Regional Sewer Utility	\$ 793.10	4348500 - Water & Sewer	1020958 Apr'24	5/1/24 Monon Community Center
UKG Inc.	\$ 16,043.06	4350900 - Other Cont. Services	PRINV0452358	3/7/24 Payroll System Quarterly Subscription Fees
Verizon Wireless	\$ 120.04	4344100 - Cellular Phone Fees	9962470527	4/23/24 Jet Packs at Monon Community Center
Williams Associates Architects	\$ 37,720.36	4462000 - Parks MC Admin,Structure Impmnt	0022501	5/21/24 MCC Multipurpose Room West/Kidzone Improvements
Willow Marketing Management, Inc.	\$ 75.00	4341955 - Info Sys Maint/Contracts	24425	4/30/24 Website Hosting 2024 Apr'24
Zogics, LLC	\$ 2,370.65	4238900 - Cleaning & Maint. Supplies	357206	5/14/24 Gym Wipes May'24
May 7 - Jun 3, 24	\$ 306,504.66			

Carmel/Clay Board of Parks and Recreation
 Claim Sheet Fund 110 - Parks and Recreation
 June 11, 2024

Name	Amount	Account	Num	Memo
May 7 - Jun 3, 24				
AES Indiana	\$ 635.35	4348000 · Electricity	200000620568 Apr'24	4/30/24 Perelman Pavilion
Carmel Utilities	\$ 24.03	4348500 · Water & Sewer	7051300000 Apr'24	5/13/24 Central Dog Park
Carmel Utilities	\$ 255.41	4348500 · Water & Sewer	2623000000 May'24	5/24/24 Wilfong Pavilion
Carmel Utilities	\$ 116.22	4348500 · Water & Sewer	5200000000 May'24	5/24/24 Perelman Pavilion
CenterPoint Energy	\$ 177.09	4349000 · Gas	55889065 Apr'24	5/8/24 Perelman Pavilion
Corvus Janitorial Systems	\$ 1,359.00	4350600 · Cleaning Services	406191010-109	6/1/24 2024 Janitorial Services - Perelman Pavilion
Corvus Janitorial Systems	\$ 813.00	4350600 · Cleaning Services	406191003-107	6/1/24 2024 Janitorial Services - Wilfong Pavilion
Duke Energy	\$ 510.48	4348000 · Electricity	10122730092 Apr'24	4/30/24 Wilfong Pavilion
Duke Energy	\$ 44.39	4348000 · Electricity	910121498172 May'24	5/29/24 Central Park Dog Park
Ellis Mechanical & Electrical	\$ 1,701.71	4350100 · Building Repairs & Maint.	24039	2/29/24 2024 Perelman Pavilion HVAC Preventative Maintenance QTR 1
Ellis Mechanical & Electrical	\$ 491.36	4350100 · Building Repairs & Maint.	24038	2/29/24 2024 Wilfong Pavilion HVAC Preventative Maintenance QTR 1
Ellis Mechanical & Electrical	\$ 1,701.71	4350100 · Building Repairs & Maint.	24102	5/22/24 2024 Perelman HVAC Preventative Maintenance QTR 2
Ellis Mechanical & Electrical	\$ 491.36	4350100 · Building Repairs & Maint.	24104	5/22/24 2024 Wilfong HVAC Preventative Maintenance QTR 2
Ellis Mechanical & Electrical	\$ 3,546.57	4350100 · Building Repairs & Maint.	240581	5/22/24 Service - Wilfong Water "Hammer" Pressure Repair
Magers Bookkeeping Services LLC	\$ 175.00	4341999 · Other Professional Fees	1170	5/28/24 2024 Bookkeeping Services
Republic Services	\$ 262.84	4350101 · Trash Collection	0761-006442329	5/25/24 Trash & Recycling Services - Wilfong Pavilion
Republic Services	\$ 206.48	4350101 · Trash Collection	0761-006443308	5/25/24 Trash & Recycling Services Perelman Pavilion
Scat Pest Control	\$ 100.00	4350100 · Building Repairs & Maint.	351978	5/17/24 Wilfong Pavilion 2024 Pest Control Services
SmithGroup	\$ 1,500.00	4350900 · Other Cont. Services	0178631	5/15/24 Engagement of Services - The Corner
TriCo Regional Sewer Utility	\$ 114.82	4348500 · Water & Sewer	1039051 Apr'24	5/1/24 Perelman Pavilion
White's Ace Hardware	\$ 840.00	4238900 · Other Maintenance Supplies	29755997	4/9/24 Dog Litter Bags for Dog Park
May 7 - Jun 3, 24	<u>\$ 15,066.82</u>			

Carmel/Clay Board of Parks and Recreation
 Claim Sheet for
 Fund 103 Capital Fund
 Fund 106 Park Impact Fees
 Fund 853 Gift Fund
 Fund 101 Reserve
 CCPR Internal Transfer
 June 11, 2024

Name	Amount	Class	Account	Number	Memo
Fund 103 - Capital Fund					
Crossroad Engineers, PC	\$ 1,575.00	103	4462000 · Parks MC Admin,Structure Impn	240566	5/1/24 Central Park Boardwalk Replacement Project Design PO#59268
Eco Logic LLC	\$ 10,907.00	103	4462000 · Parks MC Admin,Structure Impn	5621	5/24/24 2024 Central Park Invasive Plant Management PO#59503
Mattingly Concrete Inc.	\$ 4,158.77	103	4462000 · Parks MC Admin,Structure Impn	123585-19671-1	3/8/24 Concrete Slab Additions for Flowing Well Park PO#59284
Otto's Parking Marking Company	\$ 21,342.00	103	4462000 · Parks MC Admin,Structure Impn	0497677-JN	5/14/24 Central Park & Dog Park Parking Lot Restriping & Crack Fill PO#59544
SJCA Inc.	\$ 25,674.10	103	4460715 - White River Greenway	21580	4/30/24 White River Greenway North Extension Construction (READi Grant) PO#58269
StreetScan	\$ 1,400.00	103	4462000 · Parks MC Admin,Structure Impn	1076	4/30/24 Asphalt Scanning Services for Greenway Trails PO#59539
Weihe Engineers	\$ 354.00	103	4462000 · Parks MC Admin,Structure Impn	87536	5/6/24 Thomas Marcuccilli Nature Park Retaining Wall Repair PO#59487
Total Fund 103	\$ 65,410.87				
Fund 106 - Park Impact Fee					
CTI Construction LLC	\$ 19,627.00	106	4460715 - White River Greenway	24-111-2	5/8/24 White River Greenway North Extension Project PO#55676
CTI Construction LLC	\$ 7,175.00	106	4460715 - White River Greenway	21-114-6	5/8/24 White River Greenway North Extension Project PO#55676
SJCA Inc.	\$ 795.40	106	4460715 - White River Greenway	21579	4/30/24 White River Greenway North Extension Construction PO#55548
Total Fund 106	\$ 27,597.40				
Fund 853 - Gift Fund					
Kroger	\$ 49.20	853	5023990 · Other Expenses	051782	4/10/24 Culture Committee Walk-In the Park 2024 Event Supplies PO#XX-14129
Total Fund 853	\$ 49.20				
Fund 101 - General Fund Reserve Encumbrance					
Green Touch Services, Inc.	\$ 4,200.00	1125423	(R) 4350400 · Grounds Maintenance	145412	3/11/24 Monon Central Core Spring 2023 Landscape Enhancements PO#57716
Total 101 Encumbrance	\$ 4,200.00				
Internal Transfer					
R & F - Perelman Pavilion	\$ 2,250.00	1081-99	4341999 · Other Professional Fees	Internal Transfer	5/14/24 Spring Break Camp Usage - Perelman Pavilion
R & F - Wilfong Pavilion	\$ 1,750.00	1081-99	4341999 · Other Professional Fees	Internal Transfer	5/14/24 Spring Break Camp Usage -Wilfong Pavilion
Total Internal Transfer	\$ 4,000.00				

Page 1 of 8

Refund Report

Jun 5, 2024
11:30 AM

Receipt Date/Time: From May 1, 2024 12:00 AM through May 31, 2024 11:59 PM

Receipt #	Date	Time	Payer	Payment Type	Refund Details /	Amount Paid	Receipt Total
2000299.005	May 26, 2024	9:30 AM	Reaves, Aja	Credit Card Account	No: *7218 Exp: 04/2027	-\$ 120.00	
							-\$ 120.00
2000300.005	May 26, 2024	12:04 PM	Reymer, Wendy	Credit Card Account	No: *3152 Exp: 02/2027	-\$ 120.00	
							-\$ 120.00
2000301.005	May 26, 2024	12:06 PM	Shea, Marcia	Credit Card Account	No: *2322 Exp: 02/2028	-\$ 120.00	
							-\$ 120.00
2000302.005	May 26, 2024	12:08 PM	Pryor, Courtney	Credit Card Account	No: *2762 Exp: 02/2029	-\$ 120.00	
							-\$ 120.00
2000303.005	May 26, 2024	12:11 PM	Reeves, Bryan	Credit Card Account	No: *3592 Exp: 03/2026	-\$ 120.00	
							-\$ 120.00
2000304.005	May 26, 2024	12:12 PM	Studer, Sarah	Credit Card Account	No: *2062 Exp: 05/2027	-\$ 120.00	
							-\$ 120.00
2000305.005	May 26, 2024	12:14 PM	Rosado, Indhyra	Credit Card Account	No: *4333 Exp: 09/2028	-\$ 120.00	
							-\$ 120.00
2000306.005	May 26, 2024	12:15 PM	Harper, NiLeah	Credit Card Account	No: *7160 Exp: 11/2026	-\$ 120.00	
							-\$ 120.00
2000307.005	May 26, 2024	12:16 PM	Hana, Samuel	Credit Card Account	No: *5376 Exp: 01/2028	-\$ 120.00	
							-\$ 120.00
2000308.005	May 26, 2024	12:28 PM	Wright, Abby	Credit Card Account	No: *2879 Exp: 07/2026	-\$ 120.00	
							-\$ 120.00
2000309.005	May 26, 2024	12:30 PM	Cabazza, Aracelis	Credit Card Account	No: *0283 Exp: 11/2025	-\$ 30.00	
							-\$ 30.00
2002422.004	May 7, 2024	5:57 AM	Ryan, David	Credit Card Account	No: *3767 Exp: 07/2027	-\$ 22.87	
							-\$ 22.87
2002423.004	May 8, 2024	4:24 PM	Lin, Hai	Credit Card Account	No: *6158 Exp: 03/2026	-\$ 30.97	
					Guest Request		-\$ 30.97
2002424.004	May 9, 2024	11:00 AM	Vandall, Lisa	Credit Card Account	No: *7219 Exp: 10/2026	-\$ 195.00	
							-\$ 195.00

Page 4 of 8

Refund Report

Jun 5, 2024
11:30 AM

Receipt Date/Time: From May 1, 2024 12:00 AM through May 31, 2024 11:59 PM

Receipt #	Date	Time	Payer	Payment Type	Refund Details /	Amount Paid	Receipt Total
2002452.004	May 31, 2024	4:08 PM	Sabree, Nagiyah	Credit Card Account	No: *5779 Exp: 09/2027	-\$ 30.00	
							-\$ 30.00
2002453.004	May 31, 2024	4:27 PM	Spears, Dianna	Credit Card Account	No: *0789 Exp: 05/2027	-\$ 240.00	
							-\$ 240.00
2010168.003	May 1, 2024	9:20 AM	Churak, Katya	Credit Card Account	No: *1764 Exp: 08/2027	-\$ 65.00	
					Guest Request		-\$ 65.00
2010169.003	May 1, 2024	9:21 AM	Hilton, Barbara	Credit Card Account	No: *5039 Exp: 11/2024	-\$ 65.00	
					Guest Request		-\$ 65.00
2010170.003	May 1, 2024	9:25 AM	Goodwin, Kara	Credit Card Account	No: *7341 Exp: 07/2027	-\$ 245.00	
					Lifeguard Staff Discount		-\$ 245.00
2010173.003	May 1, 2024	2:55 PM	Hughes, Kimberly	Credit Card Account	No: *6150 Exp: 11/2028	-\$ 65.00	
					Guest Request		-\$ 65.00
2010174.003	May 4, 2024	2:58 PM	Rossie, Emma	Credit Card Account	No: *8484 Exp: 03/2027	-\$ 245.00	
					Guest Request		-\$ 245.00
2010175.003	May 6, 2024	8:47 AM	Lee, Kyong	Credit Card Account	No: *5266 Exp: 10/2027	-\$ 30.00	
					Low Enrollment		-\$ 30.00
2010176.003	May 6, 2024	12:21 PM	Hatcher, Zyaria	Credit Card Account	No: *9830 Exp: 02/2028	-\$ 267.50	
							-\$ 267.50
2010177.003	May 6, 2024	12:28 PM	Cummings, hayley	Credit Card Account	No: *5989 Exp: 08/2028	-\$ 214.00	
							-\$ 214.00
2010178.003	May 6, 2024	12:33 PM	hanleynoel@gmail.com, William	Credit Card Account	No: *4133 Exp: 02/2029	-\$ 214.00	
							-\$ 214.00
2010179.003	May 7, 2024	2:16 PM	Newell, Linda	Credit Card Account	No: *6869 Exp: 03/2028	-\$ 50.00	
					Low Enrollment		-\$ 50.00

Page 5 of 8

Refund Report

Jun 5, 2024

11:30 AM

Receipt Date/Time: From May 1, 2024 12:00 AM through May 31, 2024 11:59 PM

Receipt #	Date	Time	Payer	Payment Type	Refund Details /	Amount Paid	Receipt Total
2010180.003	May 8, 2024	11:01 AM	Bae, Sunhee	Credit Card Account	No: *0165 Exp: 12/2028	-\$ 40.00	
					Low Enrollment		-\$ 40.00
2010181.003	May 8, 2024	11:02 AM	Harris, Naomi	Credit Card Account	No: *2905 Exp: 11/2024	-\$ 40.00	
					Low Enrollment		-\$ 40.00
2010182.003	May 8, 2024	11:03 AM	May, Elise	Credit Card Account	No: *7642 Exp: 06/2028	-\$ 40.00	
					Low Enrollment		-\$ 40.00
2010183.003	May 8, 2024	12:25 PM	Tareen, Sarah	Credit Card Account	No: *9399 Exp: 02/2027	-\$ 80.25	
							-\$ 80.25
2010184.003	May 8, 2024	12:32 PM	Tareen, Sarah	Credit Card Account	No: *9399 Exp: 02/2027	-\$ 187.25	
							-\$ 187.25
2010185.003	May 8, 2024	3:24 PM	Kwon, Margaret	Credit Card Account	No: *7659 Exp: 12/2025	-\$ 46.00	
					Guest Request		-\$ 46.00
2010186.003	May 9, 2024	11:53 AM	Boswell, Emily	Credit Card Account	No: *9795 Exp: 02/2029	-\$ 48.00	
					Guest Request		-\$ 48.00
2010187.003	May 9, 2024	6:06 PM	Nicol, Elaine	Credit Card Account	No: *4875 Exp: 12/2027	-\$ 50.00	
					Guest Request		-\$ 50.00
2010188.003	May 10, 2024	12:30 PM	Taylor, Sheretta	Credit Card Account	No: *3860 Exp: 09/2026	-\$ 370.00	
							-\$ 370.00
2010189.003	May 13, 2024	9:16 AM	Kouns, Kathrine	Credit Card Account	No: *6601 Exp: 06/2025	-\$ 235.00	
					Guest Request		-\$ 235.00
2010190.003	May 13, 2024	12:12 PM	Burton, Christina	Credit Card Account	No: *1802 Exp: 08/2028	-\$ 267.50	
							-\$ 267.50
2010191.003	May 13, 2024	2:41 PM	Mallineni, Sahithi	Credit Card Account	No: *3687 Exp: 10/2026	-\$ 70.00	
					Guest Request		-\$ 70.00

Page 6 of 8

Refund Report

Jun 5, 2024
11:30 AM

Receipt Date/Time: From May 1, 2024 12:00 AM through May 31, 2024 11:59 PM

Receipt #	Date	Time	Payer	Payment Type	Refund Details /	Amount Paid	Receipt Total
2010193.003	May 15, 2024	9:26 AM	Virivada, Rupa	Credit Card Account	No: *3755 Exp: 07/2025	-\$ 80.00	
					Guest Request		-\$ 80.00
2010194.003	May 15, 2024	9:28 AM	Virivada, Rupa	Credit Card Account	No: *3755 Exp: 07/2025	-\$ 80.00	
					Guest Request		-\$ 80.00
2010198.003	May 17, 2024	9:16 AM	Conover, Diane	Credit Card Account	No: *7128 Exp: 11/2027	-\$ 30.00	
					Guest Request		-\$ 30.00
2010199.003	May 17, 2024	6:56 PM	Carlson, Gayle	Credit Card Account	No: *5662 Exp: 12/2025	-\$ 18.75	
							-\$ 18.75
2010200.003	May 21, 2024	9:09 AM	Maas, Tina	Credit Card Account	No: *8198 Exp: 04/2027	-\$ 59.00	
					Guest Request		-\$ 59.00
2010201.003	May 22, 2024	10:30 AM	Sever, Christine	Credit Card Account	No: *1212 Exp: 11/2027	-\$ 25.00	
					Advanced Request		-\$ 25.00
2010202.003	May 22, 2024	4:39 PM	Kaser, Karen	Credit Card Account	No: *2680 Exp: 02/2028	-\$ 97.00	
					Program Cancelled.		-\$ 97.00
2010203.003	May 23, 2024	9:16 AM	Schouten, Kelsey	Credit Card Account	No: *8687 Exp: 12/2028	-\$ 245.00	
					Guest Request		-\$ 245.00
2010204.003	May 23, 2024	9:19 AM	Torvik, Jessica	Credit Card Account	No: *5568 Exp: 01/2029	-\$ 65.00	
					Guest Request		-\$ 65.00
2010206.003	May 26, 2024	11:47 AM	Padek, Wende	Credit Card Account	No: *3019 Exp: 12/2028	-\$ 120.00	
					Wende Padek: Refund due to guest request and weather closures.		-\$ 120.00
2010207.003	May 27, 2024	10:14 AM	Akkammanavar Umapathi, Veerabhadrapa	Credit Card Account	No: *1755 Exp: 03/2027	-\$ 80.00	
					Guest Request		-\$ 80.00

Refund Report

Jun 5, 2024
11:30 AM

Receipt Date/Time: From May 1, 2024 12:00 AM through May 31, 2024 11:59 PM

Receipt #	Date	Time	Payer	Payment Type	Refund Details /	Amount Paid	Receipt Total
2010226.003	May 31, 2024	7:22 AM	Stein, Melissa	Credit Card Account	No: *6959 Exp: 01/2028	-\$ 14.50	
							-\$ 14.50
2010227.003	May 31, 2024	7:22 AM	Reister, Curtis	Credit Card Account	No: *2119 Exp: 11/2024	-\$ 14.50	
							-\$ 14.50
2010228.003	May 31, 2024	7:22 AM	Miller, Stephen	Credit Card Account	No: *5997 Exp: 07/2026	-\$ 14.50	
							-\$ 14.50
2010229.003	May 31, 2024	7:22 AM	White, James	Credit Card Account	No: *0851 Exp: 01/2025	-\$ 14.50	
							-\$ 14.50
2010230.003	May 31, 2024	10:19 AM	Kirsh, Grant	Credit Card Account	No: *5001 Exp: 01/2027	-\$ 321.00	
							-\$ 321.00
2010231.003	May 31, 2024	10:47 AM	Thakkar, Jignesh	Credit Card Account	No: *4078 Exp: 08/2026	-\$ 214.00	
							-\$ 214.00

Totals:	Mail Check:	\$ 0.00
	Credit Card Refund:	-\$ 9,137.70
	To Account:	\$ 0.00
	In Cash:	\$ 0.00
	Debit Card:	\$ 0.00
	Gift Card:	\$ 0.00

Grand Total: -\$ 9,137.70

RSU

EZChildTrack Credit Card Refund Report**Program: Extended School Enrichment/Summer Camp Series****Transaction Detail: 5/1/24-5/31/24**

Primary Account Name	Posted On	Amount Refunded
Guilds, Valerie	5/28/2024	\$ 140.00
Stout, Benjamin	5/31/2024	\$ 325.00
Soni, Kavita	5/29/2024	\$ 45.00
Soni, Kavita	5/29/2024	\$ 151.00
Epting, Brian	5/13/2024	\$ 30.00
Epting, Brian	5/13/2024	\$ 305.00
Donlan, Angela	5/7/2024	\$ 90.00
Total		\$ 1,086.00

Carmel/Clay Board of Parks and Recreation
 Claim Sheet
 June 11, 2024

Fund	Amount
TOTAL PARKS GENERAL FUND 101	122,784.69
TOTAL PARKS GENERAL FUND 101 RESERVE	4,200.00
TOTAL EXTENDED SCHOOL ENRICHMENT FUND 108	155,383.25
TOTAL MONON COMMUNITY CENTER FUND 109	306,504.66
TOTAL CHANGE FUND SEASONAL INCREASE 109-5023990	15,400.00
TOTAL PARKS FACILITIES FUND 110	15,066.82
TOTAL PARKS CAPITAL FUND 103	65,410.87
TOTAL PARK IMPACT FEE FUND 106	27,597.40
TOTAL PARKS GIFT FUND 853	49.20
CCPR Internal Transfers	4,000.00
Active Software Fees	4/29/24-5/26/24 23,589.64
Active Software Credit Card Refunds	5/1/24-5/31/24 9,137.70
EZChildTrack Software Credit Card Refunds	5/1/24-5/31/24 1,086.00
TOTAL CLAIM SHEET	<u>750,210.23</u>

DocuSigned by:

 13E18FBD88A1402

6/6/2024

Signature*

Date

*I hereby certify that the foregoing account is just and correct, that the amount claimed is legally due, after allowing all just credits, and that no part of the same has been paid.

Signature

Date

**Carmel/Clay Board of Parks and Recreation
Board Meeting Agenda Item**

PRESENTER Lin Zheng, Treasurer	ACTION REQUESTED Approval
ITEM/SUBJECT Clay Township Claim Sheet June 11, 2024	
DOLLAR AMOUNT / FUND N/A	MEETING DATE June 11, 2024

SUMMARY:

The Clay Township Claim Sheet dated June 11, 2024 is included for additions or corrections.

STAFF RECOMMENDATION:

“I move to approve the Clay Township Claim Sheet dated June 11, 2024.”

Carmel/Clay Board of Parks and Recreation
 Claim Sheet for
 Clay Township of Hamilton County
 June 11, 2024

Name	Amount	Account		Number	Memo
B & H Photo	\$ 15,007.68	1215	4AA - Park System Capital Maintenance	224117335	5/14/24 Projectors for Dream Tree PO#59448
B & H Photo	\$ (3,751.92)	1215	4AA - Park System Capital Maintenance	224200255	5/17/24 Projectors for Dream Tree PO#59448
B & H Photo	\$ 3,751.92	1215	4AA - Park System Capital Maintenance	224690904	6/4/24 Projectors for Dream Tree PO#59448
Belmont Graphics LLC	\$ 180.00	1215	4AA - Park System Capital Maintenance	71420	5/19/24 Parks Interpretive Signage & Maps for Central Park PO#59694
Belmont Graphics LLC	\$ 1,000.00	1215	4AA - Park System Capital Maintenance	71433	6/5/24 Parks Interpretive Signage & Maps for Central Park PO#59694
Peters Franklin LTD.	\$ 5,355.81	1215	4AA - Park System Capital Maintenance	16096	5/1/24 Capital Projects Funding Plan Assistance PO#59287
Weihe Engineers	\$ 1,100.00	1215	4AA - Park System Capital Maintenance	84545	5/6/24 West Park Boardwalk Investigation PO#57963
Williams Creek Management	\$ 19,061.75	1215	4AA - Park System Capital Maintenance	24138	5/29/24 River Heritage Park Forest Mitigation Agreement PO#58594
TOTAL CLAIM SHEET	<u>41,705.24</u>				

Signature*

Date

*I hereby certify that the foregoing account is just and correct, that the amount claimed is legally due, after allowing all just credits, and that no part of the same has been paid.

Signature

Date

**Carmel/Clay Board of Parks and Recreation
Board Meeting Agenda Item**

<p>PRESENTER Kurtis Baumgartner, Assistant Director of Parks and Recreation/COO</p>	<p>ACTION REQUESTED Approval</p>
<p>ITEM/SUBJECT CCPR Payroll for May 3, 2024, May 17, 2024, and May 31, 2024</p>	
<p>DOLLAR AMOUNT/FUND N/A</p>	<p>MEETING DATE June 11, 2024</p>

SUMMARY:

Provided for your approval are payroll wages and liabilities for payroll dates May 3, 2024, May 17, 2024, and May 31, 2024.

RECOMMENDED MOTION:

“I move to approve payroll wages and liabilities for payroll dates May 3, 2024, May 17, 2024, and May 31, 2024.”

Carmel/Clay Board of Parks and Recreation Payroll Claims Form

Total Gross Wages for Regular Payroll dated 05/03/2024	<u>\$271,783.60</u>
Total Payroll Liabilities for Regular Payroll dated 05/03/2024	<u>\$98,680.90</u>
Total Gross Wages for Regular Payroll dated 05/17/2024	<u>\$283,531.77</u>
Total Payroll Liabilities for Regular Payroll dated 05/17/2024	<u>\$100,049.08</u>
Total Gross Wages for Regular Payroll dated 05/31/2024	<u>\$367,781.17</u>
Total Payroll Liabilities for Regular Payroll dated 05/31/2024	<u>\$108,324.69</u>

I hereby certify that payroll amounts listed above are true and correct and I have audited the same in accordance with IC 5-11-9-2.

DocuSigned by:
Eric Mehl

Administration & Planning Director

6/3/2024

Date

We have examined the foregoing payroll charges in the total amount of \$1,230,151.21, and such payroll is in compliance with Resolution No. 8-13-02-02.

Park Board President

Date

**Carmel/Clay Board of Parks and Recreation
Board Meeting Agenda Item**

PRESENTER Eric Mehl, Administration & Planning Director/CAO	ACTION REQUESTED Acceptance
ITEM/SUBJECT Monetary Gifts, Grants, Partnerships, and Sponsorships for April 2024	
DOLLAR AMOUNT / FUND N/A	MEETING DATE June 11, 2024

RECEIVED AS	DATE	AMOUNT	DONOR	DESIGNATION	GL/FUND
Sponsorship	05/01/2024	\$1,500.00	Puccini's Pizza	Waterpark Cabana Sponsorship	853 (Gift Fund)
Donation	05/07/2024	\$100.00	Peggy J. Wurster	Amy Furry Dog Trail	853 (Gift Fund)
Donation	05/13/2024	\$300.00	Tikal Inc Construction	Adaptive 5k	853 (Gift Fund)
Grant	05/21/2024	\$2,800.00	Amos Butler Audubon Society	Nature Education	853 (Gift Fund)
Donation	5/21/2024	\$100.00	Anonymous	Staff Appreciation	853 (Gift Fund)
Donation	05/21/2024	\$100.00	Babra L Knight	Amy Furry Dog Trail	853 (Gift Fund)

TOTAL RECEIPTS: **\$4,900.00**

STAFF RECOMMENDATION:

Accept monies as received.

**Carmel/Clay Board of Parks and Recreation
Board Meeting Agenda Item**

<small>PRESENTER</small> Michael Klitzing, Director of Parks and Recreation/CEO	<small>ACTION REQUESTED</small>
<small>ITEM/SUBJECT</small> Consideration of Resolution G-2024-001 Entering into a Lease Agreement with Clay Township for ESE Office Space	
<small>BUDGET APPROPRIATION</small>	<small>MEETING DATE</small> June 11, 2024

SUMMARY:

The cover sheet and resolution were not available at the time of Park Board packet assembly.